

Form **990**

Return of Organization Exempt From Income Tax
Under section 501(c), 527, or 4947(a)(1) of the Internal Revenue Code (except private foundations)

OMB No. 1545-0047

2014
Open to Public Inspection

Department of the Treasury
Internal Revenue Service

▶ Do not enter social security numbers on this form as it may be made public.
▶ Information about Form 990 and its instructions is at www.irs.gov/form990

A For the 2014 calendar year, or tax year beginning **OCT 1, 2014** and ending **SEP 30, 2015**

B Check if applicable: <input type="checkbox"/> Address change <input type="checkbox"/> Name change <input type="checkbox"/> Initial return <input type="checkbox"/> Final return/terminated <input type="checkbox"/> Amended return <input type="checkbox"/> Application pending	C Name of organization St. Luke's Health System, Ltd. Doing business as Number and street (or P.O. box if mail is not delivered to street address) Room/suite 190 E. Bannock City or town, state or province, country, and ZIP or foreign postal code Boise, ID 83712 F Name and address of principal officer: David C. Pate, M.D., J.D. same as (c)	D Employer identification number 56-2570681 E Telephone number 208-381-3790 G Gross receipts \$ 283,118,343. H(a) Is this a group return for subordinates? <input type="checkbox"/> Yes <input checked="" type="checkbox"/> No H(b) Are all subordinates included? <input type="checkbox"/> Yes <input type="checkbox"/> No If "No," attach a list. (see instructions) H(c) Group exemption number ▶
I Tax-exempt status: <input checked="" type="checkbox"/> 501(c)(3) <input type="checkbox"/> 501(c) () ◀ (insert no.) <input type="checkbox"/> 4947(a)(1) or <input type="checkbox"/> 527		
J Website: ▶ www.stlukeonline.org		
K Form of organization: <input checked="" type="checkbox"/> Corporation <input type="checkbox"/> Trust <input type="checkbox"/> Association <input type="checkbox"/> Other ▶		
L Year of formation: 2006		M State of legal domicile: ID

Part I Summary

1	Briefly describe the organization's mission or most significant activities: <u>Management of the delivery of healthcare services</u>		
	2 Check this box <input type="checkbox"/> if the organization discontinued its operations or disposed of more than 25% of its net assets.		
Activities & Governance	3 Number of voting members of the governing body (Part VI, line 1a)	3	14
	4 Number of independent voting members of the governing body (Part VI, line 1b)	4	9
	5 Total number of individuals employed in calendar year 2014 (Part V, line 2a)	5	0
	6 Total number of volunteers (estimate if necessary)	6	530
	7a Total unrelated business revenue from Part VIII, column (C), line 12	7a	0.
	7b Net unrelated business taxable income from Form 990-T, line 34	7b	0.
	Revenue	8 Contributions and grants (Part VIII, line 1h)	Prior Year
9 Program service revenue (Part VIII, line 2g)		0.	0.
10 Investment income (Part VIII, column (A), lines 3, 4, and 7d)		253,997,979.	281,133,932.
11 Other revenue (Part VIII, column (A), lines 5, 6d, 8c, 9c, 10c, and 11e)		<430,381.>	1,973,717.
12 Total revenue - add lines 8 through 11 (must equal Part VIII, column (A), line 12)		253,567,598.	283,107,649.
Expenses	13 Grants and similar amounts paid (Part IX, column (A), lines 1-3)	689,625.	2,045,384.
	14 Benefits paid to or for members (Part IX, column (A), line 4)	0.	0.
	15 Salaries, other compensation, employee benefits (Part IX, column (A), lines 5-10)	153,648,352.	179,516,296.
	16a Professional fundraising fees (Part IX, column (A), line 11e)	0.	0.
	b Total fundraising expenses (Part IX, column (D), line 25) ▶	0.	
	17 Other expenses (Part IX, column (A), lines 11a-11d, 11f-24e)	99,229,621.	101,545,969.
	18 Total expenses. Add lines 13-17 (must equal Part IX, column (A), line 25)	253,567,598.	283,107,649.
19 Revenue less expenses. Subtract line 18 from line 12	0.	0.	
Net Assets or Fund Balances	20 Total assets (Part X, line 16)	Beginning of Current Year	End of Year
	21 Total liabilities (Part X, line 26)	367,582,677.	377,047,700.
	22 Net assets or fund balances. Subtract line 21 from line 20	375,024,402.	383,001,902.
		<7,441,725.>	<5,954,202.>

Part II Signature Block

Under penalties of perjury, I declare that I have examined this return, including accompanying schedules and statements, and to the best of my knowledge and belief, it is true, correct, and complete. Declaration of preparer (other than officer) is based on all information of which preparer has any knowledge.

Sign Here	Signature of officer <u>Peter DiDio</u> Peter DiDio, Vice President, Controller Type or print name and title	Date <u>8-4-16</u>	
Paid Preparer Use Only	Print/Type preparer's name John W. Sadoff, Jr.	Preparer's signature <u>John W. Sadoff, Jr.</u>	Date 8-4-16
	Firm's name ▶ Deloitte Tax LLP Firm's address ▶ 655 WEST BROADWAY, SUITE 700 SAN DIEGO, CA 92101-8590	Check if self-employed <input type="checkbox"/> PTIN P00540589	Firm's EIN ▶ 86-1065772 Phone no. 619-232-6500

May the IRS discuss this return with the preparer shown above? (see instructions) Yes No

Part III Statement of Program Service Accomplishments

Check if Schedule O contains a response or note to any line in this Part III [X]

1 Briefly describe the organization's mission: Improve the health of people in our region through the management of the delivery of healthcare services

2 Did the organization undertake any significant program services during the year which were not listed on the prior Form 990 or 990-EZ? [] Yes [X] No

3 Did the organization cease conducting, or make significant changes in how it conducts, any program services? [] Yes [X] No

4 Describe the organization's program service accomplishments for each of its three largest program services, as measured by expenses.

4a (Code:) (Expenses \$ 242,301,780. including grants of \$ 2,045,384.) (Revenue \$ 281,133,932.) St. Luke's Health System supports and oversees the operations of qualified inpatient and outpatient care services for all of the supported hospital organizations within the St. Luke's Health System, including St. Luke's Regional Medical Center, Ltd., Mountain States Tumor Institute, Inc., St. Luke's Wood River Medical Center, Ltd., St. Luke's Magic Valley Regional Medical Center, Ltd. and St. Luke's McCall, Ltd.

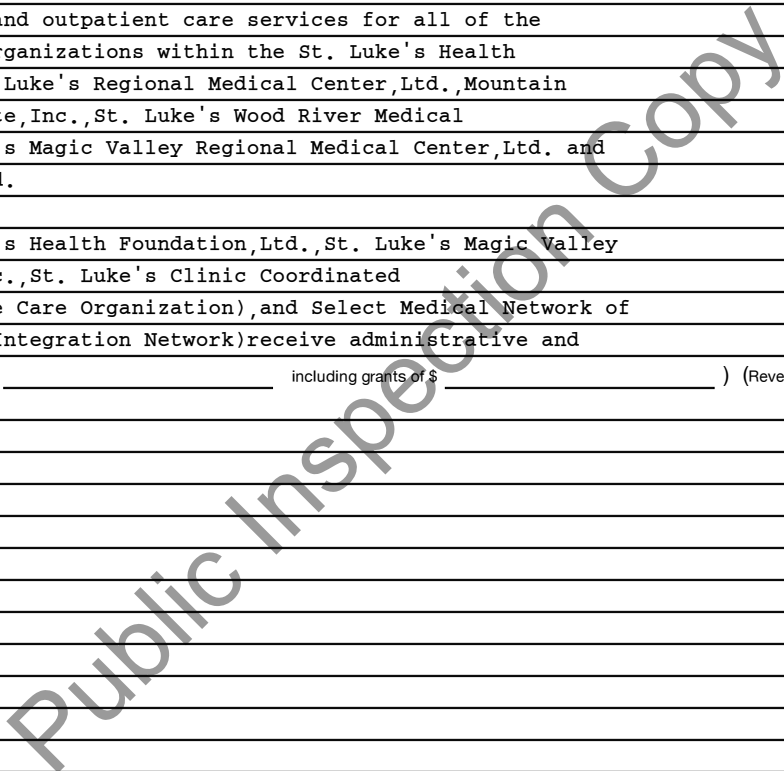
In addition, St. Luke's Health Foundation, Ltd., St. Luke's Magic Valley Health Foundation, Inc., St. Luke's Clinic Coordinated Care, Ltd. (Accountable Care Organization), and Select Medical Network of Idaho, Inc. (Clinical Integration Network) receive administrative and

4b (Code:) (Expenses \$ including grants of \$) (Revenue \$)

4c (Code:) (Expenses \$ including grants of \$) (Revenue \$)

4d Other program services (Describe in Schedule O.) (Expenses \$ including grants of \$) (Revenue \$)

4e Total program service expenses 242,301,780.



Part IV Checklist of Required Schedules

Table with 3 columns: Question ID, Yes, No. Rows include questions 1 through 20b regarding organizational requirements and financial reporting.

Part IV Checklist of Required Schedules (continued)

Table with 3 columns: Question ID, Yes, No. Rows include questions 21 through 38 regarding grants, compensation, tax-exempt bonds, and organizational transactions.

Part V Statements Regarding Other IRS Filings and Tax Compliance

Check if Schedule O contains a response or note to any line in this Part V

Input box for Schedule O check

Main table with columns for question numbers (1a-14b), descriptions, and Yes/No columns. Includes questions about Form 1096, Form W-2G, Form W-3, foreign accounts, and charitable contributions.

Part VI Governance, Management, and Disclosure For each "Yes" response to lines 2 through 7b below, and for a "No" response to line 8a, 8b, or 10b below, describe the circumstances, processes, or changes in Schedule O. See instructions.

Check if Schedule O contains a response or note to any line in this Part VI [X]

Section A. Governing Body and Management

Table with 3 columns: Question, Yes, No. Rows include: 1a Enter the number of voting members of the governing body at the end of the tax year (14); 1b Enter the number of voting members included in line 1a, above, who are independent (9); 2 Did any officer, director, trustee, or key employee have a family relationship or a business relationship with any other officer, director, trustee, or key employee? (X); 3 Did the organization delegate control over management duties customarily performed by or under the direct supervision of officers, directors, or trustees, or key employees to a management company or other person? (X); 4 Did the organization make any significant changes to its governing documents since the prior Form 990 was filed? (X); 5 Did the organization become aware during the year of a significant diversion of the organization's assets? (X); 6 Did the organization have members or stockholders? (X); 7a Did the organization have members, stockholders, or other persons who had the power to elect or appoint one or more members of the governing body? (X); 7b Are any governance decisions of the organization reserved to (or subject to approval by) members, stockholders, or persons other than the governing body? (X); 8a Did the organization contemporaneously document the meetings held or written actions undertaken during the year by the following: The governing body? (X); 8b Each committee with authority to act on behalf of the governing body? (X); 9 Is there any officer, director, trustee, or key employee listed in Part VII, Section A, who cannot be reached at the organization's mailing address? If "Yes," provide the names and addresses in Schedule O (X).

Section B. Policies (This Section B requests information about policies not required by the Internal Revenue Code.)

Table with 3 columns: Question, Yes, No. Rows include: 10a Did the organization have local chapters, branches, or affiliates? (X); 10b If "Yes," did the organization have written policies and procedures governing the activities of such chapters, affiliates, and branches to ensure their operations are consistent with the organization's exempt purposes?; 11a Has the organization provided a complete copy of this Form 990 to all members of its governing body before filing the form? (X); 11b Describe in Schedule O the process, if any, used by the organization to review this Form 990.; 12a Did the organization have a written conflict of interest policy? If "No," go to line 13 (X); 12b Were officers, directors, or trustees, and key employees required to disclose annually interests that could give rise to conflicts? (X); 12c Did the organization regularly and consistently monitor and enforce compliance with the policy? If "Yes," describe in Schedule O how this was done (X); 13 Did the organization have a written whistleblower policy? (X); 14 Did the organization have a written document retention and destruction policy? (X); 15 Did the process for determining compensation of the following persons include a review and approval by independent persons, comparability data, and contemporaneous substantiation of the deliberation and decision? 15a The organization's CEO, Executive Director, or top management official (X); 15b Other officers or key employees of the organization (X); 16a Did the organization invest in, contribute assets to, or participate in a joint venture or similar arrangement with a taxable entity during the year? (X); 16b If "Yes," did the organization follow a written policy or procedure requiring the organization to evaluate its participation in joint venture arrangements under applicable federal tax law, and take steps to safeguard the organization's exempt status with respect to such arrangements?

Section C. Disclosure

- 17 List the states with which a copy of this Form 990 is required to be filed: None
18 Section 6104 requires an organization to make its Forms 1023 (or 1024 if applicable), 990, and 990-T (Section 501(c)(3)s only) available for public inspection. Indicate how you made these available. Check all that apply. [X] Own website [] Another's website [X] Upon request [] Other (explain in Schedule O)
19 Describe in Schedule O whether (and if so, how) the organization made its governing documents, conflict of interest policy, and financial statements available to the public during the tax year.
20 State the name, address, and telephone number of the person who possesses the organization's books and records: Peter DiDio Vice-President, Controller - 208-381-1251 190 E. Bannock, Boise, ID 83712

Part VII Compensation of Officers, Directors, Trustees, Key Employees, Highest Compensated Employees, and Independent Contractors

Check if Schedule O contains a response or note to any line in this Part VII

Section A. Officers, Directors, Trustees, Key Employees, and Highest Compensated Employees

1a Complete this table for all persons required to be listed. Report compensation for the calendar year ending with or within the organization's tax year.

- List all of the organization's **current** officers, directors, trustees (whether individuals or organizations), regardless of amount of compensation. Enter -0- in columns (D), (E), and (F) if no compensation was paid.
- List all of the organization's **current** key employees, if any. See instructions for definition of "key employee."
- List the organization's five **current** highest compensated employees (other than an officer, director, trustee, or key employee) who received reportable compensation (Box 5 of Form W-2 and/or Box 7 of Form 1099-MISC) of more than \$100,000 from the organization and any related organizations.
- List all of the organization's **former** officers, key employees, and highest compensated employees who received more than \$100,000 of reportable compensation from the organization and any related organizations.
- List all of the organization's **former directors or trustees** that received, in the capacity as a former director or trustee of the organization, more than \$10,000 of reportable compensation from the organization and any related organizations.

List persons in the following order: individual trustees or directors; institutional trustees; officers; key employees; highest compensated employees; and former such persons.

Check this box if neither the organization nor any related organization compensated any current officer, director, or trustee.

(A) Name and Title	(B) Average hours per week (list any hours for related organizations below line)	(C) Position (do not check more than one box, unless person is both an officer and a director/trustee)						(D) Reportable compensation from the organization (W-2/1099-MISC)	(E) Reportable compensation from related organizations (W-2/1099-MISC)	(F) Estimated amount of other compensation from the organization and related organizations
		Individual trustee or director	Institutional trustee	Officer	Key employee	Highest compensated employee	Former			
(1) Mr. Arthur F. Oppenheimer Chairman	3.00	X		X			0.	0.	0.	
(2) Ms. Brigette Bilyeu Director	3.00	X					0.	0.	0.	
(3) Mr. Larry Cope Director	3.00	X					0.	0.	0.	
(4) Luci DiMaggio, M.D. Director	3.00 40.00	X					0.	9,231.	0.	
(5) Mr. Alan Horner Director	3.00	X					0.	0.	0.	
(6) Mr. Dan Krahn Director	3.00	X					0.	0.	0.	
(7) Mr. Bob Lokken Director	3.00	X					0.	0.	0.	
(8) Mr. Jon Miller Director	3.00	X					0.	0.	0.	
(9) Mr. Rich Raimondi Director	3.00	X					0.	0.	0.	
(10) Mr. Thomas Saldin Director	3.00	X					0.	0.	0.	
(11) Ms. Karen Vauk Director	3.00	X					0.	0.	0.	
(12) Mr. Bill Whitacre Director	3.00 0.00	X					0.	0.	0.	
(13) Ms. Barbara Wilson Director	3.00 0.00	X					0.	0.	0.	
(14) David C. Pate, M.D., J.D. President & CEO	40.00 0.00	X		X			0.	1,108,272.	25,947.	
(15) Mr. Chris Roth SR VP, Chief Operating Officer	40.00 2.00	X		X			0.	584,624.	35,634.	
(16) Mr. Jeffrey S. Taylor SR VP/CFO/Treasurer	40.00 12.00			X			0.	1,227,091.	<3,464.>	
(17) Ms. Christine L. Neuhoff VP/Legal Affairs/Secretary	40.00 12.00			X			0.	396,045.	36,674.	

Part VII Section A. Officers, Directors, Trustees, Key Employees, and Highest Compensated Employees (continued)

(A) Name and title	(B) Average hours per week (list any hours for related organizations below line)	(C) Position (do not check more than one box, unless person is both an officer and a director/trustee)						(D) Reportable compensation from the organization (W-2/1099-MISC)	(E) Reportable compensation from related organizations (W-2/1099-MISC)	(F) Estimated amount of other compensation from the organization and related organizations
		Individual trustee or director	Institutional trustee	Officer	Key employee	Highest compensated employee	Former			
(18) Barton F. Hill, M.D. VP, Chief Quality Officer	40.00 0.00				X			0.	430,849.	32,376.
(19) Ms. Maureen O'Keefe VP, Human Resources	40.00 0.00				X			0.	671,702.	37,721.
(20) David K. Seppi, M.D. VP, Executive Medical Direc	40.00 2.00				X			0.	466,797.	27,519.
(21) Marc S. Chasin, M.D. VP, Information Technology	40.00 0.00				X			0.	348,711.	34,104.
(22) Mr. Randall M. Billings VP, Payor Provider Relation	40.00 0.00					X		0.	274,748.	26,780.
(23) Mr. Peter P. DiDio VP, Controller	40.00 0.00					X		0.	263,118.	38,134.
(24) Mr. Jeffrey R. Cilek VP, Governmental Affairs	20.00 20.00					X		0.	244,129.	36,797.
(25) Faciszewski MD, Thomas G. VP, Supply Chain and Procurement	40.00 0.00					X		0.	241,648.	17,004.
(26) Mueller, Robert M. VP, Revenue Cycle	40.00 0.00					X		0.	240,123.	20,362.
1b Sub-total								0.	6,507,088.	365,588.
c Total from continuation sheets to Part VII, Section A								0.	1,765,110.	3,119.
d Total (add lines 1b and 1c)								0.	8,272,198.	368,707.

2 Total number of individuals (including but not limited to those listed above) who received more than \$100,000 of reportable compensation from the organization **0**

	Yes	No
3 Did the organization list any former officer, director, or trustee, key employee, or highest compensated employee on line 1a? If "Yes," complete Schedule J for such individual	X	
4 For any individual listed on line 1a, is the sum of reportable compensation and other compensation from the organization and related organizations greater than \$150,000? If "Yes," complete Schedule J for such individual	X	
5 Did any person listed on line 1a receive or accrue compensation from any unrelated organization or individual for services rendered to the organization? If "Yes," complete Schedule J for such person		X

Section B. Independent Contractors

1 Complete this table for your five highest compensated independent contractors that received more than \$100,000 of compensation from the organization. Report compensation for the calendar year ending with or within the organization's tax year.

(A) Name and business address	(B) Description of services	(C) Compensation
Whitecloud Analytics, Inc. P.O. Box 8005, Boise, ID 83707	Healthcare Analytics Services	4,960,476.
FMS INC 4915 S. Union Avenue, Tulsa, OK 74107	Patient A/R Collection Service	3,083,444.
AVAAP USA INC 510 Thornall St. Ste. 250, Edison, NJ 08837	IT Projects/Consulting	2,121,827.
INFOR US INC NW 7418, Minneapolis, MN 55485-7418	IT Projects/Consulting	1,578,751.
EXTRACTABLE SOLUTIONS LLC St. Ste. 400, San Francisco, CA 94105	IT Projects/Digital Design	1,001,000.

2 Total number of independent contractors (including but not limited to those listed above) who received more than \$100,000 of compensation from the organization **40**

See Part VII, Section A Continuation sheets

Part VIII Statement of Revenue

Check if Schedule O contains a response or note to any line in this Part VIII

			(A)	(B)	(C)	(D)	
			Total revenue	Related or exempt function revenue	Unrelated business revenue	Revenue excluded from tax under sections 512 - 514	
Contributions, Gifts, Grants and Other Similar Amounts	1 a Federated campaigns	1a					
	b Membership dues	1b					
	c Fundraising events	1c					
	d Related organizations	1d					
	e Government grants (contributions)	1e					
	f All other contributions, gifts, grants, and similar amounts not included above	1f					
	g Noncash contributions included in lines 1a-1f: \$						
	h Total. Add lines 1a-1f						
Program Service Revenue	2 a Admin. Services	Business Code 561000	281,133,932.	281,133,932.			
	b						
	c						
	d						
	e						
	f All other program service revenue						
	g Total. Add lines 2a-2f		281,133,932.				
Other Revenue	3 Investment income (including dividends, interest, and other similar amounts)		425,118.			425,118.	
	4 Income from investment of tax-exempt bond proceeds						
	5 Royalties						
	6 a Gross rents	(i) Real					
		(ii) Personal					
		b Less: rental expenses					
		c Rental income or (loss)					
	d Net rental income or (loss)						
	7 a Gross amount from sales of assets other than inventory	(i) Securities					
		(ii) Other		1,559,293.			
		b Less: cost or other basis and sales expenses		10,694.			
		c Gain or (loss)		1,548,599.			
	d Net gain or (loss)		1,548,599.			1,548,599.	
	8 a Gross income from fundraising events (not including \$ _____ of contributions reported on line 1c). See Part IV, line 18	a					
		b Less: direct expenses					
c Net income or (loss) from fundraising events							
9 a Gross income from gaming activities. See Part IV, line 19	a						
	b Less: direct expenses						
	c Net income or (loss) from gaming activities						
10 a Gross sales of inventory, less returns and allowances	a						
	b Less: cost of goods sold						
	c Net income or (loss) from sales of inventory						
Miscellaneous Revenue		Business Code					
11 a							
	b						
	c						
	d All other revenue						
	e Total. Add lines 11a-11d						
12 Total revenue. See instructions.			283,107,649.	281,133,932.	0.	1,973,717.	

Part IX Statement of Functional Expenses

Section 501(c)(3) and 501(c)(4) organizations must complete all columns. All other organizations must complete column (A).

Check if Schedule O contains a response or note to any line in this Part IX

Do not include amounts reported on lines 6b, 7b, 8b, 9b, and 10b of Part VIII.	(A) Total expenses	(B) Program service expenses	(C) Management and general expenses	(D) Fundraising expenses
1 Grants and other assistance to domestic organizations and domestic governments. See Part IV, line 21	2,045,384.	2,045,384.		
2 Grants and other assistance to domestic individuals. See Part IV, line 22				
3 Grants and other assistance to foreign organizations, foreign governments, and foreign individuals. See Part IV, lines 15 and 16				
4 Benefits paid to or for members				
5 Compensation of current officers, directors, trustees, and key employees	5,699,649.		5,699,649.	
6 Compensation not included above, to disqualified persons (as defined under section 4958(f)(1)) and persons described in section 4958(c)(3)(B)				
7 Other salaries and wages	75,376,866.	62,701,893.	12,674,973.	
8 Pension plan accruals and contributions (include section 401(k) and 403(b) employer contributions)	26,120,710.	26,120,710.		
9 Other employee benefits	65,945,495.	65,945,495.		
10 Payroll taxes	6,373,576.	5,098,861.	1,274,715.	
11 Fees for services (non-employees):				
a Management	10,248,305.	8,198,644.	2,049,661.	
b Legal	512,583.	430,647.	81,936.	
c Accounting	426,416.	341,133.	85,283.	
d Lobbying				
e Professional fundraising services. See Part IV, line 17				
f Investment management fees				
g Other. (If line 11g amount exceeds 10% of line 25, column (A) amount, list line 11g expenses on Sch O.)	3,759,332.	2,084,881.	1,674,451.	
12 Advertising and promotion	896,674.	771,566.	125,108.	
13 Office expenses	4,185,200.	3,348,160.	837,040.	
14 Information technology	31,657,699.	25,326,159.	6,331,540.	
15 Royalties				
16 Occupancy	29,510.	23,608.	5,902.	
17 Travel	1,337,295.	1,069,836.	267,459.	
18 Payments of travel or entertainment expenses for any federal, state, or local public officials				
19 Conferences, conventions, and meetings				
20 Interest	325,803.	260,642.	65,161.	
21 Payments to affiliates				
22 Depreciation, depletion, and amortization	28,615,151.	22,892,121.	5,723,030.	
23 Insurance	5,810,591.	4,648,473.	1,162,118.	
24 Other expenses. Itemize expenses not covered above. (List miscellaneous expenses in line 24e. If line 24e amount exceeds 10% of line 25, column (A) amount, list line 24e expenses on Schedule O.)				
a Telephone Expense	4,923,484.	3,938,787.	984,697.	
b Recruitment Expense	3,883,005.	3,106,404.	776,601.	
c Dues/Memberships	1,983,655.	1,586,924.	396,731.	
d Purchased Services	1,023,253.	818,602.	204,651.	
e All other expenses	1,928,013.	1,542,850.	385,163.	
25 Total functional expenses. Add lines 1 through 24e	283,107,649.	242,301,780.	40,805,869.	0.
26 Joint costs. Complete this line only if the organization reported in column (B) joint costs from a combined educational campaign and fundraising solicitation.				

Check here if following SOP 98-2 (ASC 958-720)

Part X Balance Sheet

Check if Schedule O contains a response or note to any line in this Part X

		(A)		(B)
		Beginning of year		End of year
Assets	1 Cash - non-interest-bearing	251,282,583.	1	216,537,855.
	2 Savings and temporary cash investments	3,086.	2	
	3 Pledges and grants receivable, net		3	
	4 Accounts receivable, net	1,025,341.	4	5,407,975.
	5 Loans and other receivables from current and former officers, directors, trustees, key employees, and highest compensated employees. Complete Part II of Schedule L		5	
	6 Loans and other receivables from other disqualified persons (as defined under section 4958(f)(1)), persons described in section 4958(c)(3)(B), and contributing employers and sponsoring organizations of section 501(c)(9) voluntary employees' beneficiary organizations (see instr). Complete Part II of Sch L		6	
	7 Notes and loans receivable, net		7	
	8 Inventories for sale or use		8	242,185.
	9 Prepaid expenses and deferred charges	7,386,381.	9	12,545,714.
	10a Land, buildings, and equipment: cost or other basis. Complete Part VI of Schedule D	10a 300,078,635.		
	b Less: accumulated depreciation	10b 189,083,989.		
	11 Investments - publicly traded securities	27,099,637.	11	28,777,075.
	12 Investments - other securities. See Part IV, line 11	804,978.	12	1,042,250.
	13 Investments - program-related. See Part IV, line 11		13	
	14 Intangible assets		14	
	15 Other assets. See Part IV, line 11	1,812,622.	15	1,500,000.
16 Total assets. Add lines 1 through 15 (must equal line 34)	367,582,677.	16	377,047,700.	
Liabilities	17 Accounts payable and accrued expenses	69,936,541.	17	92,444,097.
	18 Grants payable		18	
	19 Deferred revenue		19	
	20 Tax-exempt bond liabilities		20	
	21 Escrow or custodial account liability. Complete Part IV of Schedule D		21	
	22 Loans and other payables to current and former officers, directors, trustees, key employees, highest compensated employees, and disqualified persons. Complete Part II of Schedule L		22	
	23 Secured mortgages and notes payable to unrelated third parties		23	
	24 Unsecured notes and loans payable to unrelated third parties		24	
	25 Other liabilities (including federal income tax, payables to related third parties, and other liabilities not included on lines 17-24). Complete Part X of Schedule D	305,087,861.	25	290,557,805.
	26 Total liabilities. Add lines 17 through 25	375,024,402.	26	383,001,902.
Net Assets or Fund Balances	Organizations that follow SFAS 117 (ASC 958), check here <input checked="" type="checkbox"/> and complete lines 27 through 29, and lines 33 and 34.			
	27 Unrestricted net assets	<7,441,725.>	27	<5,954,202.>
	28 Temporarily restricted net assets		28	
	29 Permanently restricted net assets		29	
	Organizations that do not follow SFAS 117 (ASC 958), check here <input type="checkbox"/> and complete lines 30 through 34.			
	30 Capital stock or trust principal, or current funds		30	
	31 Paid-in or capital surplus, or land, building, or equipment fund		31	
	32 Retained earnings, endowment, accumulated income, or other funds		32	
33 Total net assets or fund balances	<7,441,725.>	33	<5,954,202.>	
34 Total liabilities and net assets/fund balances	367,582,677.	34	377,047,700.	

Part XI Reconciliation of Net Assets

Check if Schedule O contains a response or note to any line in this Part XI

1	Total revenue (must equal Part VIII, column (A), line 12)	1	283,107,649.
2	Total expenses (must equal Part IX, column (A), line 25)	2	283,107,649.
3	Revenue less expenses. Subtract line 2 from line 1	3	0.
4	Net assets or fund balances at beginning of year (must equal Part X, line 33, column (A))	4	<7,441,725.>
5	Net unrealized gains (losses) on investments	5	
6	Donated services and use of facilities	6	
7	Investment expenses	7	
8	Prior period adjustments	8	
9	Other changes in net assets or fund balances (explain in Schedule O)	9	1,487,523.
10	Net assets or fund balances at end of year. Combine lines 3 through 9 (must equal Part X, line 33, column (B))	10	<5,954,202.>

Part XII Financial Statements and Reporting

Check if Schedule O contains a response or note to any line in this Part XII

	Yes	No
1 Accounting method used to prepare the Form 990: <input type="checkbox"/> Cash <input checked="" type="checkbox"/> Accrual <input type="checkbox"/> Other If the organization changed its method of accounting from a prior year or checked "Other," explain in Schedule O.		
2a Were the organization's financial statements compiled or reviewed by an independent accountant? If "Yes," check a box below to indicate whether the financial statements for the year were compiled or reviewed on a separate basis, consolidated basis, or both: <input type="checkbox"/> Separate basis <input type="checkbox"/> Consolidated basis <input type="checkbox"/> Both consolidated and separate basis		X
b Were the organization's financial statements audited by an independent accountant? If "Yes," check a box below to indicate whether the financial statements for the year were audited on a separate basis, consolidated basis, or both: <input type="checkbox"/> Separate basis <input checked="" type="checkbox"/> Consolidated basis <input type="checkbox"/> Both consolidated and separate basis	X	
c If "Yes" to line 2a or 2b, does the organization have a committee that assumes responsibility for oversight of the audit, review, or compilation of its financial statements and selection of an independent accountant? If the organization changed either its oversight process or selection process during the tax year, explain in Schedule O.	X	
3a As a result of a federal award, was the organization required to undergo an audit or audits as set forth in the Single Audit Act and OMB Circular A-133?	X	
b If "Yes," did the organization undergo the required audit or audits? If the organization did not undergo the required audit or audits, explain why in Schedule O and describe any steps taken to undergo such audits	X	

Form **990** (2014)

Public Inspection Copy

SCHEDULE A
(Form 990 or 990-EZ)

Department of the Treasury
Internal Revenue Service

Public Charity Status and Public Support

Complete if the organization is a section 501(c)(3) organization or a section 4947(a)(1) nonexempt charitable trust.
▶ Attach to Form 990 or Form 990-EZ.

▶ Information about Schedule A (Form 990 or 990-EZ) and its instructions is at www.irs.gov/form990.

OMB No. 1545-0047

2014

Open to Public Inspection

Name of the organization **St. Luke's Health System, Ltd.** Employer identification number **56-2570681**

Part I Reason for Public Charity Status (All organizations must complete this part.) See instructions.

The organization is not a private foundation because it is: (For lines 1 through 11, check only one box.)

- 1 A church, convention of churches, or association of churches described in **section 170(b)(1)(A)(i)**.
- 2 A school described in **section 170(b)(1)(A)(ii)**. (Attach Schedule E.)
- 3 A hospital or a cooperative hospital service organization described in **section 170(b)(1)(A)(iii)**.
- 4 A medical research organization operated in conjunction with a hospital described in **section 170(b)(1)(A)(iii)**. Enter the hospital's name, city, and state: _____
- 5 An organization operated for the benefit of a college or university owned or operated by a governmental unit described in **section 170(b)(1)(A)(iv)**. (Complete Part II.)
- 6 A federal, state, or local government or governmental unit described in **section 170(b)(1)(A)(v)**.
- 7 An organization that normally receives a substantial part of its support from a governmental unit or from the general public described in **section 170(b)(1)(A)(vi)**. (Complete Part II.)
- 8 A community trust described in **section 170(b)(1)(A)(vi)**. (Complete Part II.)
- 9 An organization that normally receives: (1) more than 33 1/3% of its support from contributions, membership fees, and gross receipts from activities related to its exempt functions - subject to certain exceptions, and (2) no more than 33 1/3% of its support from gross investment income and unrelated business taxable income (less section 511 tax) from businesses acquired by the organization after June 30, 1975. See **section 509(a)(2)**. (Complete Part III.)
- 10 An organization organized and operated exclusively to test for public safety. See **section 509(a)(4)**.
- 11 An organization organized and operated exclusively for the benefit of, to perform the functions of, or to carry out the purposes of one or more publicly supported organizations described in **section 509(a)(1)** or **section 509(a)(2)**. See **section 509(a)(3)**. Check the box in lines 11a through 11d that describes the type of supporting organization and complete lines 11e, 11f, and 11g.
 - a **Type I.** A supporting organization operated, supervised, or controlled by its supported organization(s), typically by giving the supported organization(s) the power to regularly appoint or elect a majority of the directors or trustees of the supporting organization. **You must complete Part IV, Sections A and B.**
 - b **Type II.** A supporting organization supervised or controlled in connection with its supported organization(s), by having control or management of the supporting organization vested in the same persons that control or manage the supported organization(s). **You must complete Part IV, Sections A and C.**
 - c **Type III functionally integrated.** A supporting organization operated in connection with, and functionally integrated with, its supported organization(s) (see instructions). **You must complete Part IV, Sections A, D, and E.**
 - d **Type III non-functionally integrated.** A supporting organization operated in connection with its supported organization(s) that is not functionally integrated. The organization generally must satisfy a distribution requirement and an attentiveness requirement (see instructions). **You must complete Part IV, Sections A and D, and Part V.**
 - e Check this box if the organization received a written determination from the IRS that it is a Type I, Type II, Type III functionally integrated, or Type III non-functionally integrated supporting organization.
 - f Enter the number of supported organizations 8

g Provide the following information about the supported organization(s).

(i) Name of supported organization	(ii) EIN	(iii) Type of organization (described on lines 1-9 above or IRC section (see instructions))	(iv) Is the organization listed in your governing document?		(v) Amount of monetary support (see Instructions)	(vi) Amount of other support (see Instructions)
			Yes	No		
St. Luke's Regional Medical Center, Ltd.	82-0161600	3	X		0.	
Mountain States Tumor Institute	82-0295026	3	X		0.	
St. Luke's Wood River Medical Center, Ltd.	84-1421665	3	X		0.	
St. Luke's Magic Valley Regional Medical Center, Ltd.	56-2570686	3	X		0.	
St. Luke's Health Foundation Ltd.	81-0600973	7	X		0.	
Total					0.	0.

Part II Support Schedule for Organizations Described in Sections 170(b)(1)(A)(iv) and 170(b)(1)(A)(vi)

(Complete only if you checked the box on line 5, 7, or 8 of Part I or if the organization failed to qualify under Part III. If the organization fails to qualify under the tests listed below, please complete Part III.)

Section A. Public Support

Calendar year (or fiscal year beginning in) ▶	(a) 2010	(b) 2011	(c) 2012	(d) 2013	(e) 2014	(f) Total
1 Gifts, grants, contributions, and membership fees received. (Do not include any "unusual grants.")						
2 Tax revenues levied for the organization's benefit and either paid to or expended on its behalf						
3 The value of services or facilities furnished by a governmental unit to the organization without charge ...						
4 Total. Add lines 1 through 3						
5 The portion of total contributions by each person (other than a governmental unit or publicly supported organization) included on line 1 that exceeds 2% of the amount shown on line 11, column (f)						
6 Public support. Subtract line 5 from line 4.						

Section B. Total Support

Calendar year (or fiscal year beginning in) ▶	(a) 2010	(b) 2011	(c) 2012	(d) 2013	(e) 2014	(f) Total
7 Amounts from line 4						
8 Gross income from interest, dividends, payments received on securities loans, rents, royalties and income from similar sources ...						
9 Net income from unrelated business activities, whether or not the business is regularly carried on ...						
10 Other income. Do not include gain or loss from the sale of capital assets (Explain in Part VI.)						
11 Total support. Add lines 7 through 10						
12 Gross receipts from related activities, etc. (see instructions)					12	
13 First five years. If the Form 990 is for the organization's first, second, third, fourth, or fifth tax year as a section 501(c)(3) organization, check this box and stop here						<input type="checkbox"/>

Section C. Computation of Public Support Percentage

14 Public support percentage for 2014 (line 6, column (f) divided by line 11, column (f))	14	%
15 Public support percentage from 2013 Schedule A, Part II, line 14	15	%
16a 33 1/3% support test - 2014. If the organization did not check the box on line 13, and line 14 is 33 1/3% or more, check this box and stop here. The organization qualifies as a publicly supported organization		<input type="checkbox"/>
b 33 1/3% support test - 2013. If the organization did not check a box on line 13 or 16a, and line 15 is 33 1/3% or more, check this box and stop here. The organization qualifies as a publicly supported organization		<input type="checkbox"/>
17a 10% -facts-and-circumstances test - 2014. If the organization did not check a box on line 13, 16a, or 16b, and line 14 is 10% or more, and if the organization meets the "facts-and-circumstances" test, check this box and stop here. Explain in Part VI how the organization meets the "facts-and-circumstances" test. The organization qualifies as a publicly supported organization		<input type="checkbox"/>
b 10% -facts-and-circumstances test - 2013. If the organization did not check a box on line 13, 16a, 16b, or 17a, and line 15 is 10% or more, and if the organization meets the "facts-and-circumstances" test, check this box and stop here. Explain in Part VI how the organization meets the "facts-and-circumstances" test. The organization qualifies as a publicly supported organization		<input type="checkbox"/>
18 Private foundation. If the organization did not check a box on line 13, 16a, 16b, 17a, or 17b, check this box and see instructions		<input type="checkbox"/>

Part III Support Schedule for Organizations Described in Section 509(a)(2)

(Complete only if you checked the box on line 9 of Part I or if the organization failed to qualify under Part II. If the organization fails to qualify under the tests listed below, please complete Part II.)

Section A. Public Support

Calendar year (or fiscal year beginning in) ▶	(a) 2010	(b) 2011	(c) 2012	(d) 2013	(e) 2014	(f) Total
1 Gifts, grants, contributions, and membership fees received. (Do not include any "unusual grants.")						
2 Gross receipts from admissions, merchandise sold or services performed, or facilities furnished in any activity that is related to the organization's tax-exempt purpose						
3 Gross receipts from activities that are not an unrelated trade or business under section 513						
4 Tax revenues levied for the organization's benefit and either paid to or expended on its behalf						
5 The value of services or facilities furnished by a governmental unit to the organization without charge						
6 Total. Add lines 1 through 5						
7a Amounts included on lines 1, 2, and 3 received from disqualified persons						
b Amounts included on lines 2 and 3 received from other than disqualified persons that exceed the greater of \$5,000 or 1% of the amount on line 13 for the year						
c Add lines 7a and 7b						
8 Public support. (Subtract line 7c from line 6.)						

Section B. Total Support

Calendar year (or fiscal year beginning in) ▶	(a) 2010	(b) 2011	(c) 2012	(d) 2013	(e) 2014	(f) Total
9 Amounts from line 6						
10a Gross income from interest, dividends, payments received on securities loans, rents, royalties and income from similar sources						
b Unrelated business taxable income (less section 511 taxes) from businesses acquired after June 30, 1975						
c Add lines 10a and 10b						
11 Net income from unrelated business activities not included in line 10b, whether or not the business is regularly carried on						
12 Other income. Do not include gain or loss from the sale of capital assets (Explain in Part VI.)						
13 Total support. (Add lines 9, 10c, 11, and 12.)						

14 First five years. If the Form 990 is for the organization's first, second, third, fourth, or fifth tax year as a section 501(c)(3) organization, check this box and **stop here**

Section C. Computation of Public Support Percentage

15 Public support percentage for 2014 (line 8, column (f) divided by line 13, column (f))	15	%
16 Public support percentage from 2013 Schedule A, Part III, line 15	16	%

Section D. Computation of Investment Income Percentage

17 Investment income percentage for 2014 (line 10c, column (f) divided by line 13, column (f))	17	%
18 Investment income percentage from 2013 Schedule A, Part III, line 17	18	%

19a 33 1/3% support tests - 2014. If the organization did not check the box on line 14, and line 15 is more than 33 1/3%, and line 17 is not more than 33 1/3%, check this box and **stop here**. The organization qualifies as a publicly supported organization

b 33 1/3% support tests - 2013. If the organization did not check a box on line 14 or line 19a, and line 16 is more than 33 1/3%, and line 18 is not more than 33 1/3%, check this box and **stop here**. The organization qualifies as a publicly supported organization

20 Private foundation. If the organization did not check a box on line 14, 19a, or 19b, check this box and see instructions

Part IV Supporting Organizations

(Complete only if you checked a box on line 11 of Part I. If you checked 11a of Part I, complete Sections A and B. If you checked 11b of Part I, complete Sections A and C. If you checked 11c of Part I, complete Sections A, D, and E. If you checked 11d of Part I, complete Sections A and D, and complete Part V.)

Section A. All Supporting Organizations

	Yes	No
1 Are all of the organization's supported organizations listed by name in the organization's governing documents? <i>If "No" describe in Part VI how the supported organizations are designated. If designated by class or purpose, describe the designation. If historic and continuing relationship, explain.</i>		X
2 Did the organization have any supported organization that does not have an IRS determination of status under section 509(a)(1) or (2)? <i>If "Yes," explain in Part VI how the organization determined that the supported organization was described in section 509(a)(1) or (2).</i>		X
3a Did the organization have a supported organization described in section 501(c)(4), (5), or (6)? <i>If "Yes," answer (b) and (c) below.</i>		X
b Did the organization confirm that each supported organization qualified under section 501(c)(4), (5), or (6) and satisfied the public support tests under section 509(a)(2)? <i>If "Yes," describe in Part VI when and how the organization made the determination.</i>		
c Did the organization ensure that all support to such organizations was used exclusively for section 170(c)(2)(B) purposes? <i>If "Yes," explain in Part VI what controls the organization put in place to ensure such use.</i>		
4a Was any supported organization not organized in the United States ("foreign supported organization")? <i>If "Yes" and if you checked 11a or 11b in Part I, answer (b) and (c) below.</i>		X
b Did the organization have ultimate control and discretion in deciding whether to make grants to the foreign supported organization? <i>If "Yes," describe in Part VI how the organization had such control and discretion despite being controlled or supervised by or in connection with its supported organizations.</i>		
c Did the organization support any foreign supported organization that does not have an IRS determination under sections 501(c)(3) and 509(a)(1) or (2)? <i>If "Yes," explain in Part VI what controls the organization used to ensure that all support to the foreign supported organization was used exclusively for section 170(c)(2)(B) purposes.</i>		
5a Did the organization add, substitute, or remove any supported organizations during the tax year? <i>If "Yes," answer (b) and (c) below (if applicable). Also, provide detail in Part VI, including (i) the names and EIN numbers of the supported organizations added, substituted, or removed, (ii) the reasons for each such action, (iii) the authority under the organization's organizing document authorizing such action, and (iv) how the action was accomplished (such as by amendment to the organizing document).</i>		X
b Type I or Type II only. Was any added or substituted supported organization part of a class already designated in the organization's organizing document?		
c Substitutions only. Was the substitution the result of an event beyond the organization's control?		
6 Did the organization provide support (whether in the form of grants or the provision of services or facilities) to anyone other than (a) its supported organizations; (b) individuals that are part of the charitable class benefited by one or more of its supported organizations; or (c) other supporting organizations that also support or benefit one or more of the filing organization's supported organizations? <i>If "Yes," provide detail in Part VI.</i>		X
7 Did the organization provide a grant, loan, compensation, or other similar payment to a substantial contributor (defined in IRC 4958(c)(3)(C)), a family member of a substantial contributor, or a 35-percent controlled entity with regard to a substantial contributor? <i>If "Yes," complete Part I of Schedule L (Form 990).</i>		X
8 Did the organization make a loan to a disqualified person (as defined in section 4958) not described in line 7? <i>If "Yes," complete Part I of Schedule L (Form 990).</i>		X
9a Was the organization controlled directly or indirectly at any time during the tax year by one or more disqualified persons as defined in section 4946 (other than foundation managers and organizations described in section 509(a)(1) or (2))? <i>If "Yes," provide detail in Part VI.</i>		X
b Did one or more disqualified persons (as defined in line 9(a)) hold a controlling interest in any entity in which the supporting organization had an interest? <i>If "Yes," provide detail in Part VI.</i>		X
c Did a disqualified person (as defined in line 9(a)) have an ownership interest in, or derive any personal benefit from, assets in which the supporting organization also had an interest? <i>If "Yes," provide detail in Part VI.</i>		X
10a Was the organization subject to the excess business holdings rules of IRC 4943 because of IRC 4943(f) (regarding certain Type II supporting organizations, and all Type III non-functionally integrated supporting organizations)? <i>If "Yes," answer (b) below.</i>		X
b Did the organization have any excess business holdings in the tax year? <i>(Use Schedule C, Form 4720, to determine whether the organization had excess business holdings.)</i>		

Part IV Supporting Organizations (continued)

	Yes	No
11 Has the organization accepted a gift or contribution from any of the following persons?		
a A person who directly or indirectly controls, either alone or together with persons described in (b) and (c) below, the governing body of a supported organization?		X
b A family member of a person described in (a) above?		X
c A 35% controlled entity of a person described in (a) or (b) above? If "Yes" to a, b, or c, provide detail in Part VI .		X

Section B. Type I Supporting Organizations

	Yes	No
1 Did the directors, trustees, or membership of one or more supported organizations have the power to regularly appoint or elect at least a majority of the organization's directors or trustees at all times during the tax year? If "No," describe in Part VI how the supported organization(s) effectively operated, supervised, or controlled the organization's activities. If the organization had more than one supported organization, describe how the powers to appoint and/or remove directors or trustees were allocated among the supported organizations and what conditions or restrictions, if any, applied to such powers during the tax year.		
2 Did the organization operate for the benefit of any supported organization other than the supported organization(s) that operated, supervised, or controlled the supporting organization? If "Yes," explain in Part VI how providing such benefit carried out the purposes of the supported organization(s) that operated, supervised, or controlled the supporting organization.		

Section C. Type II Supporting Organizations

	Yes	No
1 Were a majority of the organization's directors or trustees during the tax year also a majority of the directors or trustees of each of the organization's supported organization(s)? If "No," describe in Part VI how control or management of the supporting organization was vested in the same persons that controlled or managed the supported organization(s).		

Section D. Type III Supporting Organizations

	Yes	No
1 Did the organization provide to each of its supported organizations, by the last day of the fifth month of the organization's tax year, (1) a written notice describing the type and amount of support provided during the prior tax year, (2) a copy of the Form 990 that was most recently filed as of the date of notification, and (3) copies of the organization's governing documents in effect on the date of notification, to the extent not previously provided?	X	
2 Were any of the organization's officers, directors, or trustees either (i) appointed or elected by the supported organization(s) or (ii) serving on the governing body of a supported organization? If "No," explain in Part VI how the organization maintained a close and continuous working relationship with the supported organization(s).	X	
3 By reason of the relationship described in (2), did the organization's supported organizations have a significant voice in the organization's investment policies and in directing the use of the organization's income or assets at all times during the tax year? If "Yes," describe in Part VI the role the organization's supported organizations played in this regard.		X

Section E. Type III Functionally-Integrated Supporting Organizations

1 Check the box next to the method that the organization used to satisfy the Integral Part Test during the year (see instructions):		
a <input type="checkbox"/> The organization satisfied the Activities Test. Complete line 2 below.		
b <input checked="" type="checkbox"/> The organization is the parent of each of its supported organizations. Complete line 3 below.		
c <input type="checkbox"/> The organization supported a governmental entity. Describe in Part VI how you supported a government entity (see instructions).		
2 Activities Test. Answer (a) and (b) below.		
a Did substantially all of the organization's activities during the tax year directly further the exempt purposes of the supported organization(s) to which the organization was responsive? If "Yes," then in Part VI identify those supported organizations and explain how these activities directly furthered their exempt purposes, how the organization was responsive to those supported organizations, and how the organization determined that these activities constituted substantially all of its activities.		
b Did the activities described in (a) constitute activities that, but for the organization's involvement, one or more of the organization's supported organization(s) would have been engaged in? If "Yes," explain in Part VI the reasons for the organization's position that its supported organization(s) would have engaged in these activities but for the organization's involvement.		
3 Parent of Supported Organizations. Answer (a) and (b) below.		
a Did the organization have the power to regularly appoint or elect a majority of the officers, directors, or trustees of each of the supported organizations? Provide details in Part VI .		X
b Did the organization exercise a substantial degree of direction over the policies, programs, and activities of each of its supported organizations? If "Yes," describe in Part VI the role played by the organization in this regard.	X	

Part V Type III Non-Functionally Integrated 509(a)(3) Supporting Organizations

1 Check here if the organization satisfied the Integral Part Test as a qualifying trust on Nov. 20, 1970. See instructions. All other Type III non-functionally integrated supporting organizations must complete Sections A through E.

Section A - Adjusted Net Income		(A) Prior Year	(B) Current Year (optional)
1	Net short-term capital gain	1	
2	Recoveries of prior-year distributions	2	
3	Other gross income (see instructions)	3	
4	Add lines 1 through 3	4	
5	Depreciation and depletion	5	
6	Portion of operating expenses paid or incurred for production or collection of gross income or for management, conservation, or maintenance of property held for production of income (see instructions)	6	
7	Other expenses (see instructions)	7	
8	Adjusted Net Income (subtract lines 5, 6 and 7 from line 4)	8	

Section B - Minimum Asset Amount		(A) Prior Year	(B) Current Year (optional)
1	Aggregate fair market value of all non-exempt-use assets (see instructions for short tax year or assets held for part of year):		
a	Average monthly value of securities	1a	
b	Average monthly cash balances	1b	
c	Fair market value of other non-exempt-use assets	1c	
d	Total (add lines 1a, 1b, and 1c)	1d	
e	Discount claimed for blockage or other factors (explain in detail in Part VI):		
2	Acquisition indebtedness applicable to non-exempt-use assets	2	
3	Subtract line 2 from line 1d	3	
4	Cash deemed held for exempt use. Enter 1-1/2% of line 3 (for greater amount, see instructions).	4	
5	Net value of non-exempt-use assets (subtract line 4 from line 3)	5	
6	Multiply line 5 by .035	6	
7	Recoveries of prior-year distributions	7	
8	Minimum Asset Amount (add line 7 to line 6)	8	

Section C - Distributable Amount		(A) Prior Year	Current Year
1	Adjusted net income for prior year (from Section A, line 8, Column A)	1	
2	Enter 85% of line 1	2	
3	Minimum asset amount for prior year (from Section B, line 8, Column A)	3	
4	Enter greater of line 2 or line 3	4	
5	Income tax imposed in prior year	5	
6	Distributable Amount. Subtract line 5 from line 4, unless subject to emergency temporary reduction (see instructions)	6	
7	<input type="checkbox"/> Check here if the current year is the organization's first as a non-functionally-integrated Type III supporting organization (see instructions).		

Part V Type III Non-Functionally Integrated 509(a)(3) Supporting Organizations (continued)

Section D - Distributions	Current Year
1 Amounts paid to supported organizations to accomplish exempt purposes	
2 Amounts paid to perform activity that directly furthers exempt purposes of supported organizations, in excess of income from activity	
3 Administrative expenses paid to accomplish exempt purposes of supported organizations	
4 Amounts paid to acquire exempt-use assets	
5 Qualified set-aside amounts (prior IRS approval required)	
6 Other distributions (describe in Part VI). See instructions.	
7 Total annual distributions. Add lines 1 through 6.	
8 Distributions to attentive supported organizations to which the organization is responsive (provide details in Part VI). See instructions.	
9 Distributable amount for 2014 from Section C, line 6	
10 Line 8 amount divided by Line 9 amount	

Section E - Distribution Allocations (see instructions)	(i) Excess Distributions	(ii) Underdistributions Pre-2014	(iii) Distributable Amount for 2014
1 Distributable amount for 2014 from Section C, line 6			
2 Underdistributions, if any, for years prior to 2014 (reasonable cause required-see instructions)			
3 Excess distributions carryover, if any, to 2014:			
a			
b			
c			
d			
e From 2013			
f Total of lines 3a through e			
g Applied to underdistributions of prior years			
h Applied to 2014 distributable amount			
i Carryover from 2009 not applied (see instructions)			
j Remainder. Subtract lines 3g, 3h, and 3i from 3f.			
4 Distributions for 2014 from Section D, line 7: \$			
a Applied to underdistributions of prior years			
b Applied to 2014 distributable amount			
c Remainder. Subtract lines 4a and 4b from 4.			
5 Remaining underdistributions for years prior to 2014, if any. Subtract lines 3g and 4a from line 2 (if amount greater than zero, see instructions).			
6 Remaining underdistributions for 2014. Subtract lines 3h and 4b from line 1 (if amount greater than zero, see instructions).			
7 Excess distributions carryover to 2015. Add lines 3j and 4c.			
8 Breakdown of line 7:			
a			
b			
c			
d Excess from 2013			
e Excess from 2014			

Schedule A (Form 990 or 990-EZ) 2014

Part VI Supplemental Information. Provide the explanations required by Part II, line 10; Part II, line 17a or 17b; and Part III, line 12.

Also complete this part for any additional information. (See instructions).

Part IV. Section A Line 1.

The governing documents for St. Luke's Health System, Ltd. (SLHS) lists

the following entities of which it is the sole member:

St. Luke's Regional Medical Center, Ltd.

St. Luke's McCall, Ltd.

St. Luke's Magic Valley Regional Medical Center, Ltd.

St. Luke's Wood River Medical Center, Ltd.

In addition, SLHS is the sole member of the following organizations

that are not listed within its bylaws, but are listed in Schedule A,

Part 1, line 11g:

St. Luke's Clinic Coordinated Care, Ltd.

St. Luke's Health Foundation, Ltd.

Select Medical Network, Inc. (dba St. Luke's Health Partners)

SLHS provides administrative and management oversight to these

entities.

Also listed within this section are the following legal entities:

Mountain States Tumor Institute, Inc.

(Sole member is St. Luke's Regional Medical Center, Ltd.)

St. Luke's Magic Valley Health Foundation, Ltd.

(Sole Member is St. Luke's Magic Valley Regional Medical Center, Ltd.)

Effective September 30, 2015, St. Luke's Magic Valley Health

Part VI Supplemental Information. Provide the explanations required by Part II, line 10; Part II, line 17a or 17b; and Part III, line 12.

Also complete this part for any additional information. (See instructions).

Foundation, Ltd. was dissolved. On this same date, its net assets were

distributed to St. Luke's Health Foundation, Ltd.

In addition, St. Luke's Health System, Ltd. replaced St. Luke's

Regional Medical Center, Ltd. As sole member of St. Luke's Health

Foundation, Ltd

Part IV. Section D., line 2.

With the exception of ex-officio board members, the election or

appointment of the members of the board of directors for any of the

supported organizations are subject to the approval by the SLHS board

of directors.

To ensure that SLHS is responsive to the needs of its supported

hospital organization, SLHS has established a governing structure where

its Board members are representative of the various geographical

regions served by its supported organizations. Within the St. Luke's

Health System, two regional governing boards, West Region, and East

Region, have been established. Within each regional board, various

community boards have been chartered to ensure that the local communities

have involvement with the operations of their respective hospital

organizations, as well as to make sure the overall health needs of

their communities are addressed.

Please refer to our response to the question in Schedule A, Part IV,

line 2a for a more detailed description of how the board structures

established within the St. Luke's Health System enables the maintaining

of a close and continuous working relationship its supported

organizations.

Part VI Supplemental Information. Provide the explanations required by Part II, line 10; Part II, line 17a or 17b; and Part III, line 12.

Also complete this part for any additional information. (See instructions).

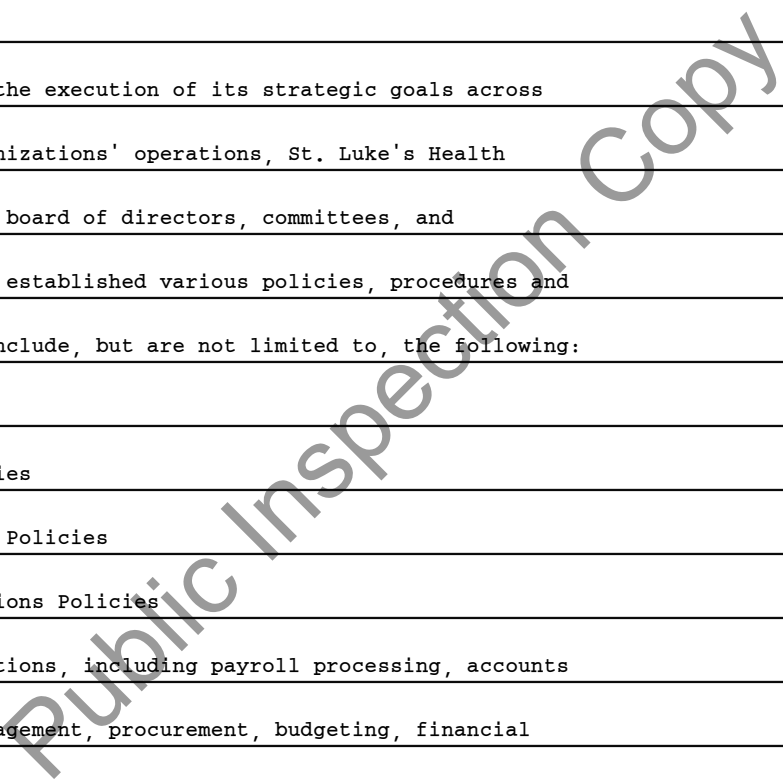
Section E. Line 3a

With the exception of ex-officio board members, the election or appointment of the members of the board of directors for any of the supported organizations are subject to the approval by the SLHS board of directors. In other words, the supporting organizations can elect and appoint their board members. However, these appointments are subject to the approval of the SLHS Board of directors.

Section E. Line 3b

To ensure consistency in the execution of its strategic goals across all of its supported organizations' operations, St. Luke's Health System, Ltd., through its board of directors, committees, and management structure, has established various policies, procedures and support functions which include, but are not limited to, the following:

- (1) Human Resource Policies
- (2) Financial Assistance Policies
- (3) Bad Debt and Collections Policies
- (4) Finance support functions, including payroll processing, accounts payable, supply chain management, procurement, budgeting, financial reporting and treasury.
- (5) Credentialing of physicians
- (6) Physician Services Administration
- (7) Information technology Support
- (8) Environmental Services
- (9) Property Management
- (10) Construction
- (11) Patient Safety
- (12) Legal



Part VI **Supplemental Information.** Provide the explanations required by Part II, line 10; Part II, line 17a or 17b; and Part III, line 12.

Also complete this part for any additional information. (See instructions).

(13) Compliance

(14) Internal Audit

(15) Risk Management

Public Inspection Copy

Part VI Supplemental Information (Schedule A, Part I, Line 11g - Information regarding supported organizations (continuation))

(i) Name of supported organization	(ii) EIN	(iii) Type of organization (described on lines 1-9 above or IRC section)	(iv) Is the organization listed in your governing document?		(v) Amount of monetary support	(vi) Amount of other support
			Yes	No		
St. Luke's McCall, Ltd.	27-3311774	3	X		0.	
St. Luke's Magic Valley Health Foundation, Inc.	82-0342863	7	X		0.	
St. Luke's Clinic Coordinated Care, Ltd.	45-5195864	9	X		0.	
Continuation Totals						

Public Inspection Copy

SCHEDULE D
(Form 990)

Department of the Treasury
Internal Revenue Service

Supplemental Financial Statements

▶ Complete if the organization answered "Yes" to Form 990, Part IV, line 6, 7, 8, 9, 10, 11a, 11b, 11c, 11d, 11e, 11f, 12a, or 12b.
▶ Attach to Form 990.

OMB No. 1545-0047

2014

Open to Public Inspection

▶ Information about Schedule D (Form 990) and its instructions is at www.irs.gov/form990.

Name of the organization St. Luke's Health System, Ltd. Employer identification number 56-2570681

Part I Organizations Maintaining Donor Advised Funds or Other Similar Funds or Accounts. Complete if the organization answered "Yes" to Form 990, Part IV, line 6.

	(a) Donor advised funds	(b) Funds and other accounts
1 Total number at end of year		
2 Aggregate value of contributions to (during year)		
3 Aggregate value of grants from (during year)		
4 Aggregate value at end of year		
5 Did the organization inform all donors and donor advisors in writing that the assets held in donor advised funds are the organization's property, subject to the organization's exclusive legal control?		<input type="checkbox"/> Yes <input type="checkbox"/> No
6 Did the organization inform all grantees, donors, and donor advisors in writing that grant funds can be used only for charitable purposes and not for the benefit of the donor or donor advisor, or for any other purpose conferring impermissible private benefit?		<input type="checkbox"/> Yes <input type="checkbox"/> No

Part II Conservation Easements. Complete if the organization answered "Yes" to Form 990, Part IV, line 7.

1 Purpose(s) of conservation easements held by the organization (check all that apply).

Preservation of land for public use (e.g., recreation or education) Preservation of a historically important land area

Protection of natural habitat Preservation of a certified historic structure

Preservation of open space

2 Complete lines 2a through 2d if the organization held a qualified conservation contribution in the form of a conservation easement on the last day of the tax year.

	Held at the End of the Tax Year
a Total number of conservation easements	2a
b Total acreage restricted by conservation easements	2b
c Number of conservation easements on a certified historic structure included in (a)	2c
d Number of conservation easements included in (c) acquired after 8/17/06, and not on a historic structure listed in the National Register	2d

3 Number of conservation easements modified, transferred, released, extinguished, or terminated by the organization during the tax year ▶ _____

4 Number of states where property subject to conservation easement is located ▶ _____

5 Does the organization have a written policy regarding the periodic monitoring, inspection, handling of violations, and enforcement of the conservation easements it holds?

Yes No

6 Staff and volunteer hours devoted to monitoring, inspecting, and enforcing conservation easements during the year ▶ _____

7 Amount of expenses incurred in monitoring, inspecting, and enforcing conservation easements during the year ▶ \$ _____

8 Does each conservation easement reported on line 2(d) above satisfy the requirements of section 170(h)(4)(B)(i) and section 170(h)(4)(B)(ii)?

Yes No

9 In Part XIII, describe how the organization reports conservation easements in its revenue and expense statement, and balance sheet, and include, if applicable, the text of the footnote to the organization's financial statements that describes the organization's accounting for conservation easements.

Part III Organizations Maintaining Collections of Art, Historical Treasures, or Other Similar Assets.

Complete if the organization answered "Yes" to Form 990, Part IV, line 8.

1a If the organization elected, as permitted under SFAS 116 (ASC 958), not to report in its revenue statement and balance sheet works of art, historical treasures, or other similar assets held for public exhibition, education, or research in furtherance of public service, provide, in Part XIII, the text of the footnote to its financial statements that describes these items.

b If the organization elected, as permitted under SFAS 116 (ASC 958), to report in its revenue statement and balance sheet works of art, historical treasures, or other similar assets held for public exhibition, education, or research in furtherance of public service, provide the following amounts relating to these items:

(i) Revenue included in Form 990, Part VIII, line 1

▶ \$ _____

(ii) Assets included in Form 990, Part X

▶ \$ _____

2 If the organization received or held works of art, historical treasures, or other similar assets for financial gain, provide the following amounts required to be reported under SFAS 116 (ASC 958) relating to these items:

a Revenue included in Form 990, Part VIII, line 1

▶ \$ _____

b Assets included in Form 990, Part X

▶ \$ _____

Part III Organizations Maintaining Collections of Art, Historical Treasures, or Other Similar Assets (continued)

3 Using the organization's acquisition, accession, and other records, check any of the following that are a significant use of its collection items (check all that apply):

- a Public exhibition
- b Scholarly research
- c Preservation for future generations
- d Loan or exchange programs
- e Other _____

4 Provide a description of the organization's collections and explain how they further the organization's exempt purpose in Part XIII.

5 During the year, did the organization solicit or receive donations of art, historical treasures, or other similar assets to be sold to raise funds rather than to be maintained as part of the organization's collection? Yes No

Part IV Escrow and Custodial Arrangements. Complete if the organization answered "Yes" to Form 990, Part IV, line 9, or reported an amount on Form 990, Part X, line 21.

1a Is the organization an agent, trustee, custodian or other intermediary for contributions or other assets not included on Form 990, Part X? Yes No

b If "Yes," explain the arrangement in Part XIII and complete the following table:

	Amount
c Beginning balance	1c
d Additions during the year	1d
e Distributions during the year	1e
f Ending balance	1f

2a Did the organization include an amount on Form 990, Part X, line 21, for escrow or custodial account liability? Yes No

b If "Yes," explain the arrangement in Part XIII. Check here if the explanation has been provided in Part XIII

Part V Endowment Funds. Complete if the organization answered "Yes" to Form 990, Part IV, line 10.

	(a) Current year	(b) Prior year	(c) Two years back	(d) Three years back	(e) Four years back
1a Beginning of year balance					
b Contributions					
c Net investment earnings, gains, and losses					
d Grants or scholarships					
e Other expenditures for facilities and programs					
f Administrative expenses					
g End of year balance					

2 Provide the estimated percentage of the current year end balance (line 1g, column (a)) held as:

- a Board designated or quasi-endowment _____ %
- b Permanent endowment _____ %
- c Temporarily restricted endowment _____ %

The percentages in lines 2a, 2b, and 2c should equal 100%.

3a Are there endowment funds not in the possession of the organization that are held and administered for the organization by:

	Yes	No
(i) unrelated organizations	3a(i)	
(ii) related organizations	3a(ii)	
b If "Yes" to 3a(ii), are the related organizations listed as required on Schedule R?	3b	

4 Describe in Part XIII the intended uses of the organization's endowment funds.

Part VI Land, Buildings, and Equipment.

Complete if the organization answered "Yes" to Form 990, Part IV, line 11a. See Form 990, Part X, line 10.

Description of property	(a) Cost or other basis (investment)	(b) Cost or other basis (other)	(c) Accumulated depreciation	(d) Book value
1a Land				
b Buildings		9,792,755.	1,270,672.	8,522,083.
c Leasehold improvements				
d Equipment		284,838,552.	187,813,317.	97,025,235.
e Other		5,447,328.		5,447,328.
Total. Add lines 1a through 1e. (Column (d) must equal Form 990, Part X, column (B), line 10c.)				110,994,646.

Part VII Investments - Other Securities.

Complete if the organization answered "Yes" to Form 990, Part IV, line 11b. See Form 990, Part X, line 12.

(a) Description of security or category (including name of security)	(b) Book value	(c) Method of valuation: Cost or end-of-year market value
(1) Financial derivatives		
(2) Closely-held equity interests		
(3) Other		
(A)		
(B)		
(C)		
(D)		
(E)		
(F)		
(G)		
(H)		
Total. (Col. (b) must equal Form 990, Part X, col. (B) line 12.) ▶		

Part VIII Investments - Program Related.

Complete if the organization answered "Yes" to Form 990, Part IV, line 11c. See Form 990, Part X, line 13.

(a) Description of investment	(b) Book value	(c) Method of valuation: Cost or end-of-year market value
(1)		
(2)		
(3)		
(4)		
(5)		
(6)		
(7)		
(8)		
(9)		
Total. (Col. (b) must equal Form 990, Part X, col. (B) line 13.) ▶		

Part IX Other Assets.

Complete if the organization answered "Yes" to Form 990, Part IV, line 11d. See Form 990, Part X, line 15.

(a) Description	(b) Book value
(1)	
(2)	
(3)	
(4)	
(5)	
(6)	
(7)	
(8)	
(9)	
Total. (Column (b) must equal Form 990, Part X, col. (B) line 15.) ▶	

Part X Other Liabilities.

Complete if the organization answered "Yes" to Form 990, Part IV, line 11e or 11f. See Form 990, Part X, line 25.

1. (a) Description of liability	(b) Book value
(1) Federal income taxes	
(2) Due to Related Organizations	178,415,084.
(3) Professional Liability	10,361,058.
(4) Workers Compensation	2,393,636.
(5) Health Insurance IBNR	9,600,000.
(6) LT DISABILITY	3,710,715.
(7) SERP PLAN ACCR'D TAX GROSSUP	195,852.
(8) SERP DC PLAN	646,023.
(9) PENSION LIABILITY	22,432,416.
Total. (Column (b) must equal Form 990, Part X, col. (B) line 25.) ▶	290,557,805.

2. Liability for uncertain tax positions. In Part XIII, provide the text of the footnote to the organization's financial statements that reports the organization's liability for uncertain tax positions under FIN 48 (ASC 740). Check here if the text of the footnote has been provided in Part XIII

Part XI Reconciliation of Revenue per Audited Financial Statements With Revenue per Return.

Complete if the organization answered "Yes" to Form 990, Part IV, line 12a.

1	Total revenue, gains, and other support per audited financial statements		1	
2	Amounts included on line 1 but not on Form 990, Part VIII, line 12:			
a	Net unrealized gains (losses) on investments	2a		
b	Donated services and use of facilities	2b		
c	Recoveries of prior year grants	2c		
d	Other (Describe in Part XIII.)	2d		
e	Add lines 2a through 2d		2e	
3	Subtract line 2e from line 1		3	
4	Amounts included on Form 990, Part VIII, line 12, but not on line 1:			
a	Investment expenses not included on Form 990, Part VIII, line 7b	4a		
b	Other (Describe in Part XIII.)	4b		
c	Add lines 4a and 4b		4c	
5	Total revenue. Add lines 3 and 4c . (This must equal Form 990, Part I, line 12.)		5	

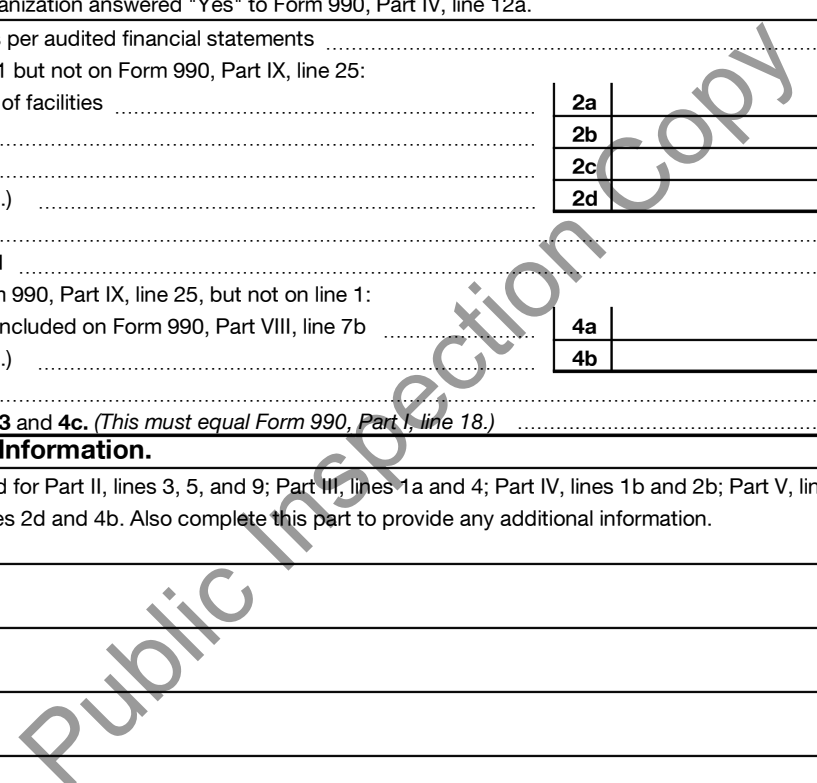
Part XII Reconciliation of Expenses per Audited Financial Statements With Expenses per Return.

Complete if the organization answered "Yes" to Form 990, Part IV, line 12a.

1	Total expenses and losses per audited financial statements		1	
2	Amounts included on line 1 but not on Form 990, Part IX, line 25:			
a	Donated services and use of facilities	2a		
b	Prior year adjustments	2b		
c	Other losses	2c		
d	Other (Describe in Part XIII.)	2d		
e	Add lines 2a through 2d		2e	
3	Subtract line 2e from line 1		3	
4	Amounts included on Form 990, Part IX, line 25, but not on line 1:			
a	Investment expenses not included on Form 990, Part VIII, line 7b	4a		
b	Other (Describe in Part XIII.)	4b		
c	Add lines 4a and 4b		4c	
5	Total expenses. Add lines 3 and 4c . (This must equal Form 990, Part I, line 18.)		5	

Part XIII Supplemental Information.

Provide the descriptions required for Part II, lines 3, 5, and 9; Part III, lines 1a and 4; Part IV, lines 1b and 2b; Part V, line 4; Part X, line 2; Part XI, lines 2d and 4b; and Part XII, lines 2d and 4b. Also complete this part to provide any additional information.



**SCHEDULE I
(Form 990)**

Department of the Treasury
Internal Revenue Service

**Grants and Other Assistance to Organizations,
Governments, and Individuals in the United States**

Complete if the organization answered "Yes" to Form 990, Part IV, line 21 or 22.

▶ **Attach to Form 990.**

▶ **Information about Schedule I (Form 990) and its instructions is at www.irs.gov/form990.**

OMB No. 1545-0047

2014

**Open to Public
Inspection**

Name of the organization St. Luke's Health System, Ltd. Employer identification number 56-2570681

Part I General Information on Grants and Assistance

- 1 Does the organization maintain records to substantiate the amount of the grants or assistance, the grantees' eligibility for the grants or assistance, and the selection criteria used to award the grants or assistance? **Yes** **No**
- 2 Describe in Part IV the organization's procedures for monitoring the use of grant funds in the United States.

Part II Grants and Other Assistance to Domestic Organizations and Domestic Governments. Complete if the organization answered "Yes" to Form 990, Part IV, line 21, for any recipient that received more than \$5,000. Part II can be duplicated if additional space is needed.

1 (a) Name and address of organization or government	(b) EIN	(c) IRC section if applicable	(d) Amount of cash grant	(e) Amount of non-cash assistance	(f) Method of valuation (book, FMV, appraisal, other)	(g) Description of non-cash assistance	(h) Purpose of grant or assistance
University of Washington P.O. Box 94224 Seattle, WA 98124	91-6001537	501(c)(3)	650,788.	0.			Support the education and retention of internal medicine and psychiatry residents for the state
United Way 2340 South Vista Avenue Boise, ID 83705	82-0299013	501(c)(3)	6,200.	0.			Provide support to the Idaho Suicide Prevention Hotline.
Susan G Komen for the Cure 6901 West Emerald Street, Suite 209 Boise, ID 83704	75-2462834	501(c)(3)	30,000.	0.			Provide support for the Race for the Cure, in partnership with Community Health Care
March of Dimes 3222 West Overland Road Boise, ID 83705	13-1846366	501(c)(3)	30,000.	0.			Support of improving health of infants by preventing birth defects, premature birth and
American Cancer Society 2676 Vista Avenue Boise, ID 83705	84-1316555	501(c)(3)	7,500.	0.			Provide support for cancer awareness events in the Treasure Valley, Wood River, and Magic
American Heart Association 270 South Orchard Street, Suite B Boise, ID 83705	13-5613797	501(c)(3)	13,000.	0.			Provide support for promotion of heart disease awareness events.

- 2 Enter total number of section 501(c)(3) and government organizations listed in the line 1 table **24.**
- 3 Enter total number of other organizations listed in the line 1 table **0.**

LHA **For Paperwork Reduction Act Notice, see the Instructions for Form 990.**

Schedule I (Form 990) (2014)

See Part IV for Column (h) descriptions

Part II Continuation of Grants and Other Assistance to Governments and Organizations in the United States (Schedule I (Form 990), Part II.)

(a) Name and address of organization or government	(b) EIN	(c) IRC section if applicable	(d) Amount of cash grant	(e) Amount of non-cash assistance	(f) Method of valuation (book, FMV, appraisal, other)	(g) Description of non-cash assistance	(h) Purpose of grant or assistance
Leukemia & Lymphoma Society 2404 West Bank Drive #104 Boise, ID 83705	13-5644916	501(c)(3)	5,000.	0.			Provide support for the "Light the Night Walk".
Idaho Foodbank 3562 South TK Avenue Boise, ID 83705	82-0425400	501(c)(3)	10,000.	0.			Support in the effort to end hunger in Idaho.
Boise State University 1910 University Drive Boise, ID 83725	82-6010706	501(c)(3)	101,450.	0.			Provide financial support for general programs and scholarships.
Family Medicine Residency of Idaho, Inc. - 777 North Raymond Street - Boise, ID 83712	20-5934739	501(c)(3)	1,024,286.	0.			Support the family residency program in Idaho.
Basque Studies Foundation, Inc. 2846 South Trailwood Way Boise, ID 83716	47-1222129	501(c)(3)	30,000.	0.			To support the spread of Basque culture and heritage.
Killebrew Thompson Memorial P.O. Box 232 Sun Valley, ID 83353	82-0341683	501(c)(3)	30,000.	0.			To provide funding for cancer research.
College of Western Idaho 6056 Birch Lane Suite 200 Nampa, ID 83687	27-1159705	501(c)(3)	23,000.	0.			Provide financial support for general programs and scholarships.
FC Nova 3924 East Lake Hazel Road Meridian, ID 83642	82-0437695	501(c)(3)	10,000.	0.			Provide support for the sport of soccer.
Jannus, Inc. 1607 West Jefferson Street Boise, ID 83702	81-6035382	501(c)(3)	8,500.	0.			General support for families and communities.

Schedule I (Form 990)

Part II Continuation of Grants and Other Assistance to Governments and Organizations in the United States (Schedule I (Form 990), Part II.)

(a) Name and address of organization or government	(b) EIN	(c) IRC section if applicable	(d) Amount of cash grant	(e) Amount of non-cash assistance	(f) Method of valuation (book, FMV, appraisal, other)	(g) Description of non-cash assistance	(h) Purpose of grant or assistance
Wood River Community YMCA P.O. Box 100 Ketchum, ID 83340	82-0481436	501(c)(3)	5,000.	0.			To support building strong kids, strong families, and a strong community.
Salmon Senior Citizens 200 Main Street Salmon, ID 83467	82-0392158	501(c)(3)	8,710.	0.			To support the provision of meals to the elderly and disabled.
Stanton Health Care 718 Shoshone Street East Twin Falls, ID 83301	84-1387194	501(c)(3)	5,000.	0.			To support counseling and education.
Cancer Connection Idaho 2504 Kootenai Street Boise, ID 83705	45-3503023	501(c)(3)	6,200.	0.			To support cancer education.
Idaho Governor's Cup P.O. Box 7807 Boise, ID 83707	20-8277116	501(c)(3)	5,750.	0.			To support scholarships for students who attend Idaho colleges.
International Rescue Committee 122 East 42nd Street New York, NY 10168	13-5660870	501(c)(3)	5,000.	0.			To support refugees and communities victimized by violence.
Be The Match Foundation 3001 Broadway Street, NE Suite 601 Minneapolis, MN 55413	41-1704734	501(c)(3)	5,000.	0.			Support of the national marrow donor program.
Ronald McDonald House 101 East Warm Springs Avenue Boise, ID 83712	94-3030996	501(c)(3)	5,000.	0.			Support the provision of temporary housing for seriously ill children and their families.
Idaho Children's Trust Fund PO Box 2015 Boise, ID 83701	82-6000995	170(c)(1)	20,000.	0.			Funding AmeriCorps VISTA position, training scholarships and materials for a Treasure

Schedule I (Form 990)

Part III Grants and Other Assistance to Domestic Individuals. Complete if the organization answered "Yes" to Form 990, Part IV, line 22.
Part III can be duplicated if additional space is needed.

(a) Type of grant or assistance	(b) Number of recipients	(c) Amount of cash grant	(d) Amount of non-cash assistance	(e) Method of valuation (book, FMV, appraisal, other)	(f) Description of non-cash assistance

Part IV Supplemental Information. Provide the information required in Part I, line 2, Part III, column (b), and any other additional information.

Part I, Line 2:

The organization endeavors to monitor its grants to ensure that such grants are used for proper purposes and not otherwise diverted from their intended use. This is accomplished by requesting recipient organizations to affirm that funds must be used solely in accordance with the grant request and budget on which the grant was based and that funds not expended for the stated purpose are to be returned to the organization. Reports are requested from time to time as deemed appropriate.

Part IV Supplemental Information

Part II, line 1, Column (h):

Name of Organization or Government: University of Washington

(h) Purpose of Grant or Assistance: Support the education and retention of internal medicine and psychiatry residents for the state of Idaho.

Name of Organization or Government: Susan G Komen for the Cure

(h) Purpose of Grant or Assistance: Provide support for the Race for the Cure, in partnership with Community Health Care Partners.

Name of Organization or Government: March of Dimes

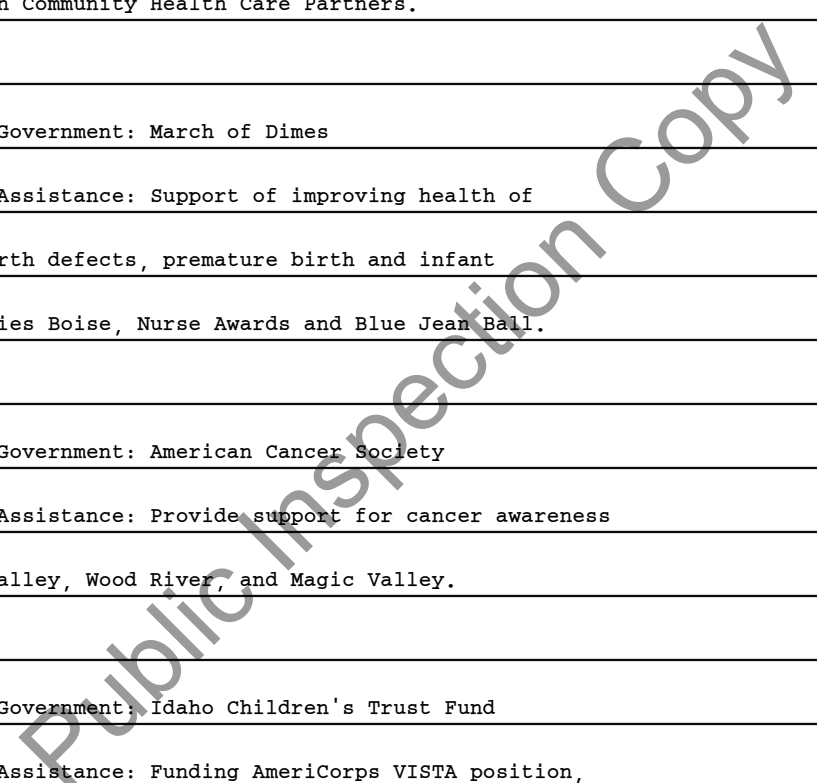
(h) Purpose of Grant or Assistance: Support of improving health of infants by preventing birth defects, premature birth and infant mortality, March for Babies Boise, Nurse Awards and Blue Jean Ball.

Name of Organization or Government: American Cancer Society

(h) Purpose of Grant or Assistance: Provide support for cancer awareness events in the Treasure Valley, Wood River, and Magic Valley.

Name of Organization or Government: Idaho Children's Trust Fund

(h) Purpose of Grant or Assistance: Funding AmeriCorps VISTA position, training scholarships and materials for a Treasure Valley wide effort to educate adults to prevent child sexual abuse.



**SCHEDULE J
(Form 990)**

Compensation Information

OMB No. 1545-0047

2014

For certain Officers, Directors, Trustees, Key Employees, and Highest Compensated Employees

▶ Complete if the organization answered "Yes" on Form 990, Part IV, line 23.

▶ Attach to Form 990.

▶ Information about Schedule J (Form 990) and its instructions is at www.irs.gov/form990.

Open to Public Inspection

Department of the Treasury
Internal Revenue Service

Name of the organization

St. Luke's Health System, Ltd.

Employer identification number

56-2570681

Part I Questions Regarding Compensation

1a Check the appropriate box(es) if the organization provided any of the following to or for a person listed in Form 990, Part VII, Section A, line 1a. Complete Part III to provide any relevant information regarding these items.

- | | |
|---|--|
| <input type="checkbox"/> First-class or charter travel | <input type="checkbox"/> Housing allowance or residence for personal use |
| <input type="checkbox"/> Travel for companions | <input type="checkbox"/> Payments for business use of personal residence |
| <input checked="" type="checkbox"/> Tax indemnification and gross-up payments | <input type="checkbox"/> Health or social club dues or initiation fees |
| <input type="checkbox"/> Discretionary spending account | <input type="checkbox"/> Personal services (e.g., maid, chauffeur, chef) |

b If any of the boxes on line 1a are checked, did the organization follow a written policy regarding payment or reimbursement or provision of all of the expenses described above? If "No," complete Part III to explain

2 Did the organization require substantiation prior to reimbursing or allowing expenses incurred by all directors, trustees, and officers, including the CEO/Executive Director, regarding the items checked in line 1a?

3 Indicate which, if any, of the following the filing organization used to establish the compensation of the organization's CEO/Executive Director. Check all that apply. Do not check any boxes for methods used by a related organization to establish compensation of the CEO/Executive Director, but explain in Part III.

- | | |
|---|---|
| <input checked="" type="checkbox"/> Compensation committee | <input type="checkbox"/> Written employment contract |
| <input checked="" type="checkbox"/> Independent compensation consultant | <input checked="" type="checkbox"/> Compensation survey or study |
| <input type="checkbox"/> Form 990 of other organizations | <input checked="" type="checkbox"/> Approval by the board or compensation committee |

4 During the year, did any person listed in Form 990, Part VII, Section A, line 1a, with respect to the filing organization or a related organization:

- a** Receive a severance payment or change-of-control payment?
- b** Participate in, or receive payment from, a supplemental nonqualified retirement plan?
- c** Participate in, or receive payment from, an equity-based compensation arrangement?
- If "Yes" to any of lines 4a-c, list the persons and provide the applicable amounts for each item in Part III.

Only section 501(c)(3), 501(c)(4), and 501(c)(29) organizations must complete lines 5-9.

5 For persons listed in Form 990, Part VII, Section A, line 1a, did the organization pay or accrue any compensation contingent on the revenues of:

- a** The organization?
- b** Any related organization?
- If "Yes" to line 5a or 5b, describe in Part III.

6 For persons listed in Form 990, Part VII, Section A, line 1a, did the organization pay or accrue any compensation contingent on the net earnings of:

- a** The organization?
- b** Any related organization?
- If "Yes" to line 6a or 6b, describe in Part III.

7 For persons listed in Form 990, Part VII, Section A, line 1a, did the organization provide any non-fixed payments not described in lines 5 and 6? If "Yes," describe in Part III

8 Were any amounts reported in Form 990, Part VII, paid or accrued pursuant to a contract that was subject to the initial contract exception described in Regulations section 53.4958-4(a)(3)? If "Yes," describe in Part III

9 If "Yes" to line 8, did the organization also follow the rebuttable presumption procedure described in Regulations section 53.4958-6(c)?

	Yes	No
1b	X	
2	X	
4a	X	
4b	X	
4c		X
5a		X
5b		X
6a		X
6b		X
7		X
8		X
9		

LHA For Paperwork Reduction Act Notice, see the Instructions for Form 990.

Schedule J (Form 990) 2014

Part II Officers, Directors, Trustees, Key Employees, and Highest Compensated Employees. Use duplicate copies if additional space is needed.

For each individual whose compensation must be reported in Schedule J, report compensation from the organization on row (i) and from related organizations, described in the instructions, on row (ii). Do not list any individuals that are not listed on Form 990, Part VII.

Note. The sum of columns (B)(i)-(iii) for each listed individual must equal the total amount of Form 990, Part VII, Section A, line 1a, applicable column (D) and (E) amounts for that individual.

(A) Name and Title		(B) Breakdown of W-2 and/or 1099-MISC compensation			(C) Retirement and other deferred compensation	(D) Nontaxable benefits	(E) Total of columns (B)(i)-(D)	(F) Compensation in column (B) reported as deferred in prior Form 990
		(i) Base compensation	(ii) Bonus & incentive compensation	(iii) Other reportable compensation				
(1) David C. Pate, M.D., J.D. President & CEO	(i)	0.	0.	0.	0.	0.	0.	0.
	(ii)	1,082,950.	0.	25,322.	13,260.	12,687.	1,134,219.	0.
(2) Mr. Chris Roth SR VP, Chief Operating Officer	(i)	0.	0.	0.	0.	0.	0.	0.
	(ii)	567,084.	0.	17,540.	17,290.	18,344.	620,258.	0.
(3) Mr. Jeffrey S. Taylor SR VP/CFO/Treasurer	(i)	0.	0.	0.	0.	0.	0.	0.
	(ii)	502,191.	0.	724,900.	<16,575.>	13,111.	1,223,627.	0.
(4) Ms. Christine L. Neuhoff VP/Legal Affairs/Secretary	(i)	0.	0.	0.	0.	0.	0.	0.
	(ii)	395,505.	0.	540.	17,290.	19,384.	432,719.	0.
(5) Barton F. Hill, M.D. VP, Chief Quality Officer	(i)	0.	0.	0.	0.	0.	0.	0.
	(ii)	389,107.	0.	41,742.	17,290.	15,086.	463,225.	0.
(6) Ms. Maureen O'Keeffe VP, Human Resources	(i)	0.	0.	0.	0.	0.	0.	0.
	(ii)	333,624.	0.	338,078.	25,350.	12,371.	709,423.	0.
(7) David K. Seppi, M.D. VP, Executive Medical Direc	(i)	0.	0.	0.	0.	0.	0.	0.
	(ii)	422,781.	0.	44,016.	13,260.	14,259.	494,316.	0.
(8) Marc S. Chasin, M.D. VP, Information Technology	(i)	0.	0.	0.	0.	0.	0.	0.
	(ii)	330,671.	0.	18,040.	13,260.	20,844.	382,815.	0.
(9) Mr. Randall M. Billings VP, Payor Provider Relation	(i)	0.	0.	0.	0.	0.	0.	0.
	(ii)	273,938.	0.	810.	13,260.	13,520.	301,528.	0.
(10) Mr. Peter P. DiDio VP, Controller	(i)	0.	0.	0.	0.	0.	0.	0.
	(ii)	244,852.	0.	18,266.	17,290.	20,844.	301,252.	0.
(11) Mr. Jeffrey R. Cilek VP, Governmental Affairs	(i)	0.	0.	0.	0.	0.	0.	0.
	(ii)	214,719.	0.	29,410.	20,319.	16,478.	280,926.	0.
(12) Faciszewski MD, Thomas G. VP, Supply Chain and Procurement	(i)	0.	0.	0.	0.	0.	0.	0.
	(ii)	217,979.	0.	23,669.	0.	17,004.	258,652.	0.
(13) Mueller, Robert M. VP, Revenue Cycle	(i)	0.	0.	0.	0.	0.	0.	0.
	(ii)	213,801.	0.	26,322.	7,460.	12,902.	260,485.	0.
(14) Mr. Edwin E. Dahlberg Former President & CEO	(i)	0.	0.	0.	0.	0.	0.	0.
	(ii)	0.	0.	319,238.	0.	116,809.	436,047.	162,520.
(15) Mr. Gary L. Fletcher Former VP, Chief Operating Officer	(i)	0.	0.	0.	0.	0.	0.	0.
	(ii)	672,786.	0.	40,394.	<148,807.>	10,363.	574,736.	0.
(16) Mr. John L. Kee Former VP, Physician Services (throug	(i)	0.	0.	0.	0.	0.	0.	0.
	(ii)	134,305.	0.	41,698.	0.	182.	176,185.	0.

Part II Officers, Directors, Trustees, Key Employees, and Highest Compensated Employees. Use duplicate copies if additional space is needed.

For each individual whose compensation must be reported in Schedule J, report compensation from the organization on row (i) and from related organizations, described in the instructions, on row (ii). Do not list any individuals that are not listed on Form 990, Part VII.

Note. The sum of columns (B)(i)-(iii) for each listed individual must equal the total amount of Form 990, Part VII, Section A, line 1a, applicable column (D) and (E) amounts for that individual.

(A) Name and Title		(B) Breakdown of W-2 and/or 1099-MISC compensation			(C) Retirement and other deferred compensation	(D) Nontaxable benefits	(E) Total of columns (B)(i)-(D)	(F) Compensation in column (B) reported as deferred in prior Form 990
		(i) Base compensation	(ii) Bonus & incentive compensation	(iii) Other reportable compensation				
(17) Mr. Michael A. Tomazic Fomer VP, Transformation Officer	(i)	0.	0.	0.	0.	0.	0.	0.
	(ii)	303,103.	0.	25,059.	0.	747.	328,909.	0.
(18) Mr. Clarence M. Pomeroy Former Vice-President	(i)	0.	0.	0.	0.	0.	0.	0.
	(ii)	161,594.	0.	66,933.	0.	23,825.	252,352.	66,933.
	(i)							
	(ii)							
	(i)							
	(ii)							
	(i)							
	(ii)							
	(i)							
	(ii)							
	(i)							
	(ii)							
	(i)							
	(ii)							
	(i)							
	(ii)							
	(i)							
	(ii)							
	(i)							
	(ii)							
	(i)							
	(ii)							

Public Inspection Copy

Part III Supplemental Information

Provide the information, explanation, or descriptions required for Part I, lines 1a, 1b, 3, 4a, 4b, 4c, 5a, 5b, 6a, 6b, 7, and 8, and for Part II. Also complete this part for any additional information.

Part I, Line 1a:

Supplemental Executive Retirement Plan (SERP)

Explanation:

St. Luke's has agreed to directly or indirectly pay all taxes caused by the vesting of accruals of the adjusted benefit prior to termination of employment. The payment shall be made in such a manner which results in the executive having no personal outlay for taxes resulting from or related to the adjusted benefit for any associated taxes.

Part I, Lines 4a-b:

During CY'14, the following individuals participated in a supplemental non-qualified executive retirement plan:

	SERP	SERP-Gross Up	Total
Jeffrey S. Taylor	\$377,721	\$ 305,937	\$683,658
Maureen O'Keefe	\$159,920	\$ 129,528	\$289,448

During CY'2014 the following retired executives received payments from a supplemental non-qualified executive retirement plan:

Part III Supplemental Information

Provide the information, explanation, or descriptions required for Part I, lines 1a, 1b, 3, 4a, 4b, 4c, 5a, 5b, 6a, 6b, 7, and 8, and for Part II. Also complete this part for any additional information.

Edwin E. Dahlberg Retired System CEO \$162,520

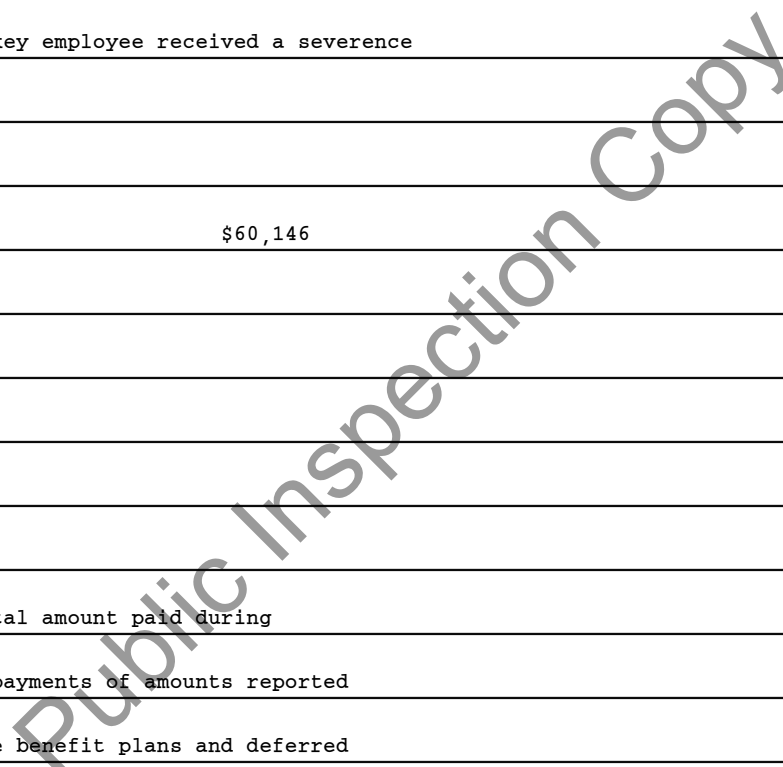
Also, during CY'2014 the following former key employee received a severance payment.

Michael A. Tomazic Former Key Employee \$60,146

Part II-Column (f)

Prior Compensation

Reportable compensation is based on the total amount paid during calendar year 2014, including current year payments of amounts reported in prior years as contributions to employee benefit plans and deferred compensation, together with investment earnings from those prior year contributions. As a result, certain amounts have been reported twice, both in prior years when earned or accrued, and again in the current year when paid.



Part III Supplemental Information

Provide the information, explanation, or descriptions required for Part I, lines 1a, 1b, 3, 4a, 4b, 4c, 5a, 5b, 6a, 6b, 7, and 8, and for Part II. Also complete this part for any additional information.

Part II-Column (c)

During CY'14 the following individuals participated in the basic pension plan. Due to changes in actuarial assumptions these individuals experienced a decrease in their vested balance in the plan.

Gary Fletcher (\$174,157)

Jeffrey Taylor (\$41,925)

Public Inspection Copy

SCHEDULE L (Form 990 or 990-EZ)

Transactions With Interested Persons

OMB No. 1545-0047

2014

Open To Public Inspection

Department of the Treasury Internal Revenue Service

Complete if the organization answered "Yes" on Form 990, Part IV, line 25a, 25b, 26, 27, 28a, 28b, or 28c, or Form 990-EZ, Part V, line 38a or 40b. Attach to Form 990 or Form 990-EZ. Information about Schedule L (Form 990 or 990-EZ) and its instructions is at www.irs.gov/form990.

Name of the organization St. Luke's Health System, Ltd. Employer identification number 56-2570681

Part I Excess Benefit Transactions (section 501(c)(3), section 501(c)(4), and 501(c)(29) organizations only).

Complete if the organization answered "Yes" on Form 990, Part IV, line 25a or 25b, or Form 990-EZ, Part V, line 40b.

Table with 4 main columns: (a) Name of disqualified person, (b) Relationship between disqualified person and organization, (c) Description of transaction, (d) Corrected? (Yes/No)

2 Enter the amount of tax incurred by the organization managers or disqualified persons during the year under section 4958 \$
3 Enter the amount of tax, if any, on line 2, above, reimbursed by the organization \$

Part II Loans to and/or From Interested Persons.

Complete if the organization answered "Yes" on Form 990-EZ, Part V, line 38a or Form 990, Part IV, line 26; or if the organization reported an amount on Form 990, Part X, line 5, 6, or 22.

Table with 9 main columns: (a) Name of interested person, (b) Relationship with organization, (c) Purpose of loan, (d) Loan to or from the organization? (To/From), (e) Original principal amount, (f) Balance due, (g) In default? (Yes/No), (h) Approved by board or committee? (Yes/No), (i) Written agreement? (Yes/No)

Total \$

Part III Grants or Assistance Benefiting Interested Persons.

Complete if the organization answered "Yes" on Form 990, Part IV, line 27.

Table with 5 main columns: (a) Name of interested person, (b) Relationship between interested person and the organization, (c) Amount of assistance, (d) Type of assistance, (e) Purpose of assistance

Part IV Business Transactions Involving Interested Persons.

Complete if the organization answered "Yes" on Form 990, Part IV, line 28a, 28b, or 28c.

(a) Name of interested person	(b) Relationship between interested person and the organization	(c) Amount of transaction	(d) Description of transaction	(e) Sharing of organization's revenues?	
				Yes	No
White Cloud Analytics	Board Member has ow	5,004,226.	White Cloud		X

Part V Supplemental Information

Provide additional information for responses to questions on Schedule L (see instructions).

Sch L, Part IV, Business Transactions Involving Interested Persons:

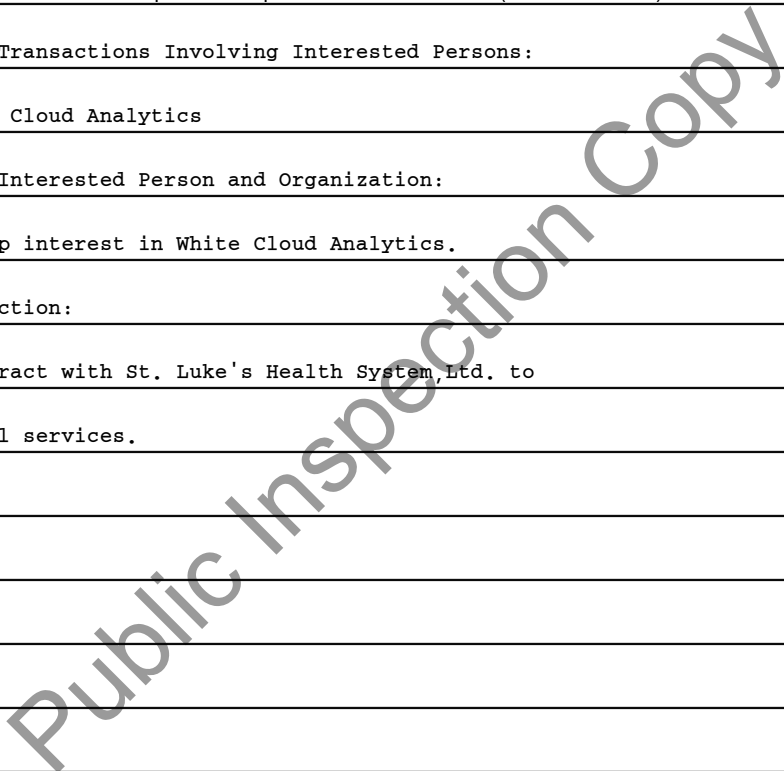
(a) Name of Person: White Cloud Analytics

(b) Relationship Between Interested Person and Organization:

Board Member has ownership interest in White Cloud Analytics.

(d) Description of Transaction:

White Cloud is under contract with St. Luke's Health System, Ltd. to provide various analytical services.



SCHEDULE O
(Form 990 or 990-EZ)

Department of the Treasury
Internal Revenue Service

Supplemental Information to Form 990 or 990-EZ

Complete to provide information for responses to specific questions on
Form 990 or 990-EZ or to provide any additional information.

▶ Attach to Form 990 or 990-EZ.

▶ Information about Schedule O (Form 990 or 990-EZ) and its instructions is at www.irs.gov/form990

OMB No. 1545-0047

2014

Open to Public
Inspection

Name of the organization

St. Luke's Health System, Ltd.

Employer identification number

56-2570681

Form 990, Part III, Line 4a, Program Service Accomplishments:

operational support within the St. Luke's Health System.

Form 990 Part III-Statement of Program Accomplishments

Program Expense:

Please note that the program expense amounts reported in Statement

III-Statement of Program Accomplishments do not include an allocation

of certain administrative and functional support costs. These costs are

classified as Management and General within Part IX-Statement of

Functional Expenses.

Form 990 Part VII Section A

Allocation of Compensation and Hours:

The total hours worked and compensation reported for Gary Fletcher, Jeff

Taylor, Chris Roth, John Kee, Christine Neuhoff, David Seppi, M.D., and Jeff

Cilek represents services rendered to the following organizations

within the St. Luke's Health System:

Gary Fletcher:

St. Luke's Health System, Ltd.

St. Luke's Clinic Coordinated Care, Ltd.

Name of the organization St. Luke's Health System,Ltd.	Employer identification number 56-2570681
---	--

Jeff Taylor:

- St. Luke's Health System,Ltd.
- St. Luke's Regional Medical Center,Ltd.
- Mountain States Tumor Institute,Inc.
- St. Luke's McCall,Ltd.
- St. Luke's Magic Valley Regional Medical Center,Ltd.
- St. Luke's Wood River Medical Center,Ltd.
- St. Luke's Clinic Coordinated Care,Ltd.

Chris Roth:

- St. Luke's Health System,Ltd.
- St. Luke's Health Foundation,Ltd.

John Kee:

- St. Luke's Health System,Ltd.

Christine Neuhoff:

- St. Luke's Health System,Ltd.
- St. Luke's Regional Medical Center,Ltd.
- Mountain States Tumor Institute,Inc.
- St. Luke's McCall,Ltd.
- St. Luke's Magic Valley Regional Medical Center,Ltd.
- St. Luke's Wood River Medical Center,Ltd.
- St. Luke's Clinic Coordinated Care,Ltd.

David Seppi,M.D.

- St. Luke's Health System,Ltd.
- St. Luke's Clinic Coordinated Care,Ltd.

Name of the organization St. Luke's Health System,Ltd.	Employer identification number 56-2570681
---	--

Jeff Cilek:

St. Luke's Health System,Ltd.

St. Luke's Health Foundation,Ltd.

Also,it should be noted that the hours reported for the officers,key employees,and highest paid employees are based on a minimum 40 hour work week. However,due to the demands of their roles within the St. Luke's Health System,the hours worked by these individuals often exceed the minimum required 40 hours.

In addition, Luci Dimaggio,M.D. is a member of a physician practice that has a professional service agreement with a related organization within the St. Luke's Health System. This individual works at least 40 hours per week on behalf of this practice for St. Luke's Magic Valley Regional Medical Center, Ltd. respectively. The practice with which they are affiliated, rather than the physicians, receive payments for their services to St. Luke's patients. The amounts paid to the practices during CY'14 are as follows:

Board Member: Luci Dimaggio,M.D.

Practice Name: Idaho Medicine Associates

Contracting Related Organization: St. Luke's Magic Valley Regional Medical Center,Ltd.

Amount Paid to the Practice: \$ 3,181,088

Name of the organization St. Luke's Health System,Ltd.	Employer identification number 56-2570681
---	--

Form 990, Part VI, Section A, line 2:

Larry Cope and Skip Oppenheimer,board members of St. Luke's Health System, Ltd.,have a business relationship.

Form 990, Part VI, Section B, line 11:

The Form 990(Form)is reviewed by an independent public accounting firm based on audited financial statements and with the assistance of the organization's finance and accounting staff. The final draft of the Form is presented to the Finance Committee of the Board of Directors. The Board receives the final version of the Form prior to filing.

Form 990, Part VI, Section B, Line 12c:

The organization annually reviews the conflict of interest policy with each board member and also with new board members. Persons covered under the policy include officers,directors, senior executives,non-director members of Board committees and others as identified by a senior executive. At all levels the board is responsible for assessing,reviewing,and resolving any conflicts of interest that have been disclosed by a covered person,or a conflict of interest disclosed by a covered person with respect to a covered person other than himself/herself. Where a conflict exists,the affected parties must recuse themselves from participating in any discussion related to the conflict.

Form 990, Part VI, Section B, Line 15:

Name of the organization St. Luke's Health System,Ltd.	Employer identification number 56-2570681
---	--

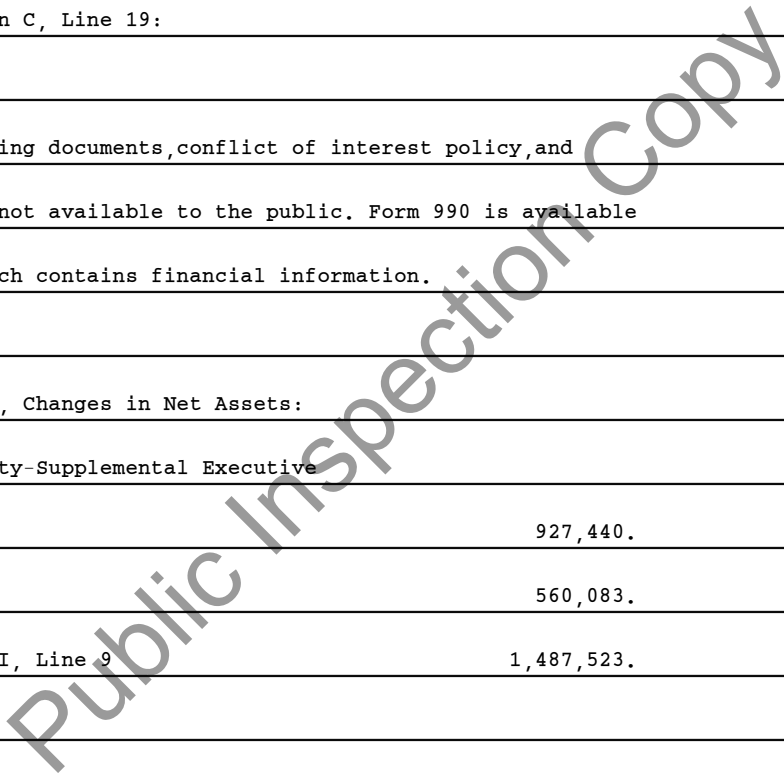
Executive compensation is set by St. Luke's boards of directors and is reviewed annually. Compensation levels are based on an independent analysis of comparable pay packages offered at similar institutions across the country, with the goal of placing executives in the 50th percentile of those surveyed. These surveys are usually done every two years,with the most recent compensation survey completed during calendar year 2014.

Form 990, Part VI, Section C, Line 19:

The organization's governing documents,conflict of interest policy,and financial statements are not available to the public. Form 990 is available for public inspection,which contains financial information.

Form 990, Part XI, line 9, Changes in Net Assets:

Change in Minimum Liability-Supplemental Executive	
Retirement Plan(SERP)	927,440.
Capital Contributions	560,083.
Total to Form 990, Part XI, Line 9	1,487,523.



**SCHEDULE R
(Form 990)**

Department of the Treasury
Internal Revenue Service

Related Organizations and Unrelated Partnerships

▶ Complete if the organization answered "Yes" on Form 990, Part IV, line 33, 34, 35b, 36, or 37.
▶ Attach to Form 990.

▶ Information about Schedule R (Form 990) and its instructions is at www.irs.gov/form990.

OMB No. 1545-0047

2014

Open to Public
Inspection

Name of the organization St. Luke's Health System,Ltd. Employer identification number 56-2570681

Part I Identification of Disregarded Entities Complete if the organization answered "Yes" on Form 990, Part IV, line 33.

(a) Name, address, and EIN (if applicable) of disregarded entity	(b) Primary activity	(c) Legal domicile (state or foreign country)	(d) Total income	(e) End-of-year assets	(f) Direct controlling entity

Part II Identification of Related Tax-Exempt Organizations Complete if the organization answered "Yes" on Form 990, Part IV, line 34 because it had one or more related tax-exempt organizations during the tax year.

(a) Name, address, and EIN of related organization	(b) Primary activity	(c) Legal domicile (state or foreign country)	(d) Exempt Code section	(e) Public charity status (if section 501(c)(3))	(f) Direct controlling entity	(g) Section 512(b)(13) controlled entity?	
						Yes	No
St. Luke's Regional Medical Center,Ltd. - 82-0161600, 190 E. Bannock, Boise, ID 83712	Healthcare Services	Idaho	501(c)(3)	3	St. Luke's Health System,Ltd.	X	
Mountain States Tumor Institute,Inc. - 82-0295026, 100 E. Idaho, Boise, ID 83712	Healthcare Services	Idaho	501(c)(3)	3	St. Luke's Regional Medical Center,Ltd.	X	
St. Luke's Wood River Medical Center,Ltd. - 84-1421665, 190 E. Bannock, Boise, ID 83712	Healthcare Services	Idaho	501(c)(3)	3	St. Luke's Health System,Ltd.	X	
St. Luke's Health Foundation,Ltd. - 81-0600973, 190 E. Bannock, Boise, ID 83712	Fundraising	Idaho	501(c)(3)	7	St. Luke's Health System,Ltd.	X	

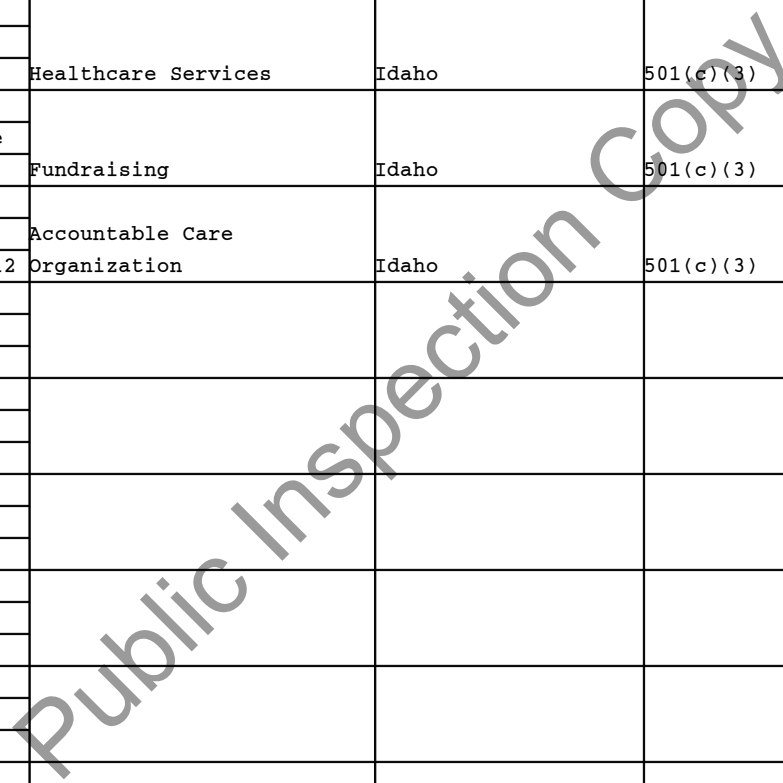
For Paperwork Reduction Act Notice, see the Instructions for Form 990.

Schedule R (Form 990) 2014

See Part VII for Continuations

Part II Continuation of Identification of Related Tax-Exempt Organizations

(a) Name, address, and EIN of related organization	(b) Primary activity	(c) Legal domicile (state or foreign country)	(d) Exempt Code section	(e) Public charity status (if section 501(c)(3))	(f) Direct controlling entity	(g) Section 512(b)(13) controlled organization?	
						Yes	No
St. Luke's Magic Valley Regional Medical Center, Ltd. - 56-2570686, 801 Pole Line Road, Twin Falls, ID 83301	Healthcare Services	Idaho	501(c)(3)	3	St. Luke's Health System, Ltd.	X	
St. Luke's McCall, Ltd. - 27-3311774 190 E. Bannock Boise, ID 83712	Healthcare Services	Idaho	501(c)(3)	3	St. Luke's Health System, Ltd.	X	
St. Luke's Magic Valley Health Foundation, Inc. - 82-0342863, 775 Pole Line Road, Twin Falls, ID 83301	Fundraising	Idaho	501(c)(3)	7	St. Luke's Magic Valley Regional Medical	X	
St. Luke's Clinic Coordinated Care, Ltd. - 45-5195864, 190 E. Bannock, Boise, ID 83712	Accountable Care Organization	Idaho	501(c)(3)	9	St. Luke's Health System, Ltd.	X	



Part III Identification of Related Organizations Taxable as a Partnership Complete if the organization answered "Yes" on Form 990, Part IV, line 34 because it had one or more related organizations treated as a partnership during the tax year.

(a) Name, address, and EIN of related organization	(b) Primary activity	(c) Legal domicile (state or foreign country)	(d) Direct controlling entity	(e) Predominant income (related, unrelated, excluded from tax under sections 512-514)	(f) Share of total income	(g) Share of end-of-year assets	(h) Disproportionate allocations?		(i) Code V-UBI amount in box 20 of Schedule K-1 (Form 1065)	(j) General or managing partner?		(k) Percentage ownership
							Yes	No		Yes	No	

Part IV Identification of Related Organizations Taxable as a Corporation or Trust Complete if the organization answered "Yes" on Form 990, Part IV, line 34 because it had one or more related organizations treated as a corporation or trust during the tax year.

(a) Name, address, and EIN of related organization	(b) Primary activity	(c) Legal domicile (state or foreign country)	(d) Direct controlling entity	(e) Type of entity (C corp, S corp, or trust)	(f) Share of total income	(g) Share of end-of-year assets	(h) Percentage ownership	(i) Section 512(b)(13) controlled entity?	
								Yes	No
Select Medical Network of Idaho, Inc. - 81-0594024, P.O. Box 1990, Boise, ID 83701	Provider Network	ID	St. Luke's Health System, Ltd.	C CORP	74,033.	565,688.	100.00%	X	

Part V Transactions With Related Organizations Complete if the organization answered "Yes" on Form 990, Part IV, line 34, 35b, or 36.

Note. Complete line 1 if any entity is listed in Parts II, III, or IV of this schedule.

1 During the tax year, did the organization engage in any of the following transactions with one or more related organizations listed in Parts II-IV?

	Yes	No
a Receipt of (i) interest, (ii) annuities, (iii) royalties, or (iv) rent from a controlled entity		X
b Gift, grant, or capital contribution to related organization(s)		X
c Gift, grant, or capital contribution from related organization(s)		X
d Loans or loan guarantees to or for related organization(s)		X
e Loans or loan guarantees by related organization(s)		X
f Dividends from related organization(s)		X
g Sale of assets to related organization(s)		X
h Purchase of assets from related organization(s)		X
i Exchange of assets with related organization(s)		X
j Lease of facilities, equipment, or other assets to related organization(s)		X
k Lease of facilities, equipment, or other assets from related organization(s)		X
l Performance of services or membership or fundraising solicitations for related organization(s)		X
m Performance of services or membership or fundraising solicitations by related organization(s)		X
n Sharing of facilities, equipment, mailing lists, or other assets with related organization(s)		X
o Sharing of paid employees with related organization(s)	X	
p Reimbursement paid to related organization(s) for expenses		X
q Reimbursement paid by related organization(s) for expenses	X	
r Other transfer of cash or property to related organization(s)		X
s Other transfer of cash or property from related organization(s)		X

2 If the answer to any of the above is "Yes," see the instructions for information on who must complete this line, including covered relationships and transaction thresholds.

(a) Name of related organization	(b) Transaction type (a-s)	(c) Amount involved	(d) Method of determining amount involved
(1) St. Luke's Regional Medical Center, Ltd.	Q	179,565,713.	Pro Rata Overhead Allocation
(2) St. Luke's Wood River Medical Center, Ltd.	Q	9,331,521.	Pro Rata Overhead Allocation
(3) St. Luke's Magic Valley Regional Medical Center, Ltd.	Q	56,593,727.	Pro Rata Overhead Allocation
(4) St. Luke's McCall, Ltd.	Q	2,854,971.	Pro Rata Overhead Allocation
(5) Mountain State Tumor Institute, Inc.	Q	34,603,809.	Pro Rata Overhead Allocation
(6) St. Luke's Health Foundation, Ltd.	Q	66,473.	Pro Rata Overhead Allocation

Part V Continuation of Transactions With Related Organizations (Schedule R (Form 990), Part V, line 2)

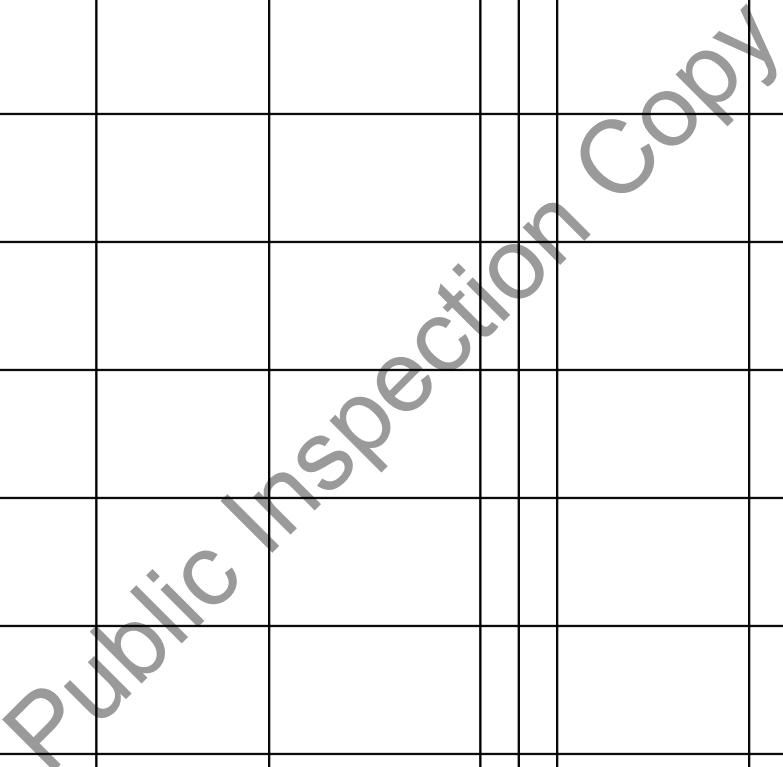
(a) Name of other organization	(b) Transaction type (a-r)	(c) Amount involved	(d) Method of determining amount involved
(7) Select Medical Network of Idaho, Inc.	Q	55,693.	Pro Rata Overhead Allocation
(8) Select Medical Network of Idaho, Inc.	P	3,170,598.	Per Management Agreement
(9)			
(10)			
(11)			
(12)			
(13)			
(14)			
(15)			
(16)			
(17)			
(18)			
(19)			
(20)			
(21)			
(22)			
(23)			
(24)			

Public Inspection Copy

Part VI Unrelated Organizations Taxable as a Partnership Complete if the organization answered "Yes" on Form 990, Part IV, line 37.

Provide the following information for each entity taxed as a partnership through which the organization conducted more than five percent of its activities (measured by total assets or gross revenue) that was not a related organization. See instructions regarding exclusion for certain investment partnerships.

(a) Name, address, and EIN of entity	(b) Primary activity	(c) Legal domicile (state or foreign country)	(d) Predominant income (related, unrelated, excluded from tax under sections 512-514)	(e) Are all partners sec. 501(c)(3) orgs.?		(f) Share of total income	(g) Share of end-of-year assets	(h) Dispropor- tionate allocations?		(i) Code V-UBI amount in box 20 of Schedule K-1 (Form 1065)	(j) General or managing partner?		(k) Percentage ownership
				Yes	No			Yes	No		Yes	No	



Part VII Supplemental Information

Provide additional information for responses to questions on Schedule R (see instructions).

Part II, Identification of Related Tax-Exempt Organizations:

Name of Related Organization:

St. Luke's Magic Valley Health Foundation, Inc.

Direct Controlling Entity: St. Luke's Magic Valley Regional Medical Center, Ltd.

Public Inspection Copy

Report of Employer-Owned Life Insurance Contracts

OMB No. 1545-2089

▶ Attach to the policyholder's tax return - See instructions.

Attachment
 Sequence No. **160**

Name(s) shown on return St. Luke's Health System, Ltd.	Identifying number 56-2570681
Name of policyholder, if different from above	Identifying number, if different from above

Type of business
 Healthcare

1 Enter the number of employees the policyholder had at the end of the tax year	1	1,566.
2 Enter the number of employees included on line 1 who were insured at the end of the tax year under the policyholder's employer-owned life insurance contract(s) issued after August 17, 2006. See <i>Section 1035 exchanges</i> for an exception	2	13.
3 Enter the total amount of employer-owned life insurance in force at the end of the tax year for employees who were insured under the contract(s) specified on line 2	3	13.
4a Does the policyholder have a valid consent (see instructions) for each employee included on line 2? <input checked="" type="checkbox"/> Yes <input type="checkbox"/> No		
b If "No," enter the number of employees included on line 2 for whom the policyholder does not have a valid consent	4b	

Public Inspection Copy